

Anti-IFI16 antibody (500-785) (STJ11105507)

GENERAL INFORMATION

Product Type	Primary antibodies
Applications	WB/FC/ELISA
Host / Source	Rabbit
Reactivity	Human

PRODUCT PROPERTIES

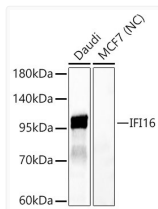
Clonality	Polyclonal
Concentration	Lot specific
Conjugation	Unconjugated
Purification	Affinity purification
Dilution Range	WB:1:500-1:1000 FC:1:500-1:1000 ELISA:Recommended starting concentration is 1 Mu g/mL. Please optimize the concentration based on your specific assay requirements.
Formulation	PBS with 0.05% Proclin300, 50% Glycerol, pH 7.3.
Isotype	IgG
Molecular Weight	Protein Mw: 75kDa/82kDa/88kDa Observed Mw: 95kDa, 98kDa
Storage Instruction	Store at -20°C for up to 1 year from the date of receipt, and avoid repeat freeze-thaw cycles.

TARGET INFORMATION

Gene ID	3428
Gene Symbol	IFI16
UniProt ID	IFI16_HUMAN
Immunogen Region	500-785
Immunogen Sequence	KSEDTISKMNDFMRMQILKE GSHFPGPFMTSIGPAESHPH TPQMPPSTPSSSFLTTLKPR LKTEPEEVSIEDSAQSDLKE VMVLNATESFVYEPKEQKKM FHATVATENEVFRVKVFNID LKEKFTPCKIIAIANYVCRN GFLEVYPFTLVADVNADRNM EIPKGLIRASVTPKINQLC SQTKGFSFVNGVFEVHKKNVR GEFTYYEIQDNTGKMEVVVH GRLTTINCEECDKLLKLCF
Specificity	Recombinant fusion protein containing a sequence corresponding to amino acids 500-785 of human IFI16 (NP_001351796.1).

ADDITIONAL INFORMATION

Note STRICTLY FOR FURTHER SCIENTIFIC RESEARCH USE ONLY (RUO). MUST NOT TO BE USED IN DIAGNOSTIC OR THERAPEUTIC APPLICATIONS.



Western blot analysis of various lysates using IFI16 Rabbit polyclonal antibody (STJ11105507) at 1:1000 dilution. Secondary antibody: HRP Goat Anti-Rabbit IgG (H+L) (STJS000856) at 1:10000 dilution. Lysates/proteins: 25 Mu g per lane. Blocking buffer: 3% nonfat dry milk in TBST. Detection: ECL Basic Kit. Negative control (NC) : MCF7. Exposure time: 0. 5s.