

## Anti-COL1A1 antibody (26-161) (STJ11105505)

### GENERAL INFORMATION

Product Type	Primary antibodies
Applications	WB/IHC-P/IF/ICC
Host / Source	Rabbit
Reactivity	Human

### PRODUCT PROPERTIES

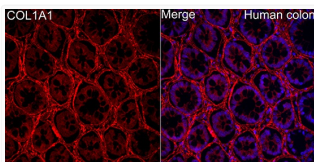
Clonality	Polyclonal
Concentration	Lot specific
Conjugation	Unconjugated
Purification	Affinity purification
Dilution Range	WB:1:1000-1:5000 IHC-P:1:50-1:200 IF/ICC:1:50-1:200
Formulation	PBS with 0.05% Proclin300, 50% Glycerol, pH 7.3.
Isotype	IgG
Molecular Weight	Protein Mw: 138kDa Observed Mw: 220kDa
Storage Instruction	Store at -20°C for up to 1 year from the date of receipt, and avoid repeat freeze-thaw cycles.

### TARGET INFORMATION

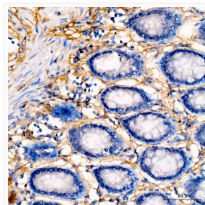
Gene ID	<a href="#">1277</a>
Gene Symbol	<a href="#">COL1A1</a>
UniProt ID	<a href="#">CO1A1_HUMAN</a>
Immunogen Region	26-161
Immunogen Sequence	GQVEGQDEDIPPITCVQNGL RYHDRDVWVKPEPCRICVCDN GKVLCDDVICDETKNCPGAE VPEGECCPVCPCDGSSEPTDQ ETTGVEGPKGDTGPRGPRGP AGPPGRDGIPIGQPLPGPPG PPGPPGPPGLGGNFAP
Specificity	Recombinant fusion protein containing a sequence corresponding to amino acids 26-161 of human Collagen I/COL1A1 (NP_000079.2).

### ADDITIONAL INFORMATION

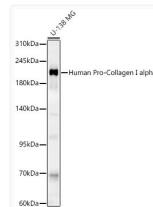
Note STRICTLY FOR FURTHER SCIENTIFIC RESEARCH USE ONLY (RUO). MUST NOT TO BE USED IN DIAGNOSTIC OR THERAPEUTIC APPLICATIONS.



Immunofluorescence analysis of paraffin-embedded human colon using Human Pro-Collagen I alpha Rabbit polyclonal antibody (STJ11105505) at dilution of 1:200 (40x lens). Secondary antibody: Cy3 Goat Anti-Rabbit IgG (H+L) at 1:500 dilution. Blue: DAPI for nuclear staining. Perform high pressure antigen retrieval with 0.01M citrate buffer (pH 6.0) prior to IF staining.



Immunohistochemistry analysis of Human Pro-Collagen I alpha in paraffin-embedded human colon tissue using Human Pro-Collagen I alpha Rabbit polyclonal antibody (STJ11105505) at a dilution of 1:200 (40x lens). High pressure antigen retrieval was performed with 0.01 M citrate buffer (pH 6.0) prior to immunohistochemistry staining.



Western blot analysis of lysates from U-138 MG cells using Human Pro-Collagen I alpha Rabbit polyclonal antibody (STJ11105505) at 1:2000 dilution. Secondary antibody:HRP Goat Anti-Rabbit IgG (H+L) (STJS000856) at 1:10000 dilution. Lysates/proteins: 25 µg per lane. Blocking buffer: 3% nonfat dry milk in TBST. Detection:ECL Enhanced Kit. Exposure time:30s.