

Anti-DLL4 antibody (27-524) (STJ11105504)

GENERAL INFORMATION

Product Type	Primary antibodies
Applications	WB/ELISA
Host / Source	Rabbit
Reactivity	Human

PRODUCT PROPERTIES

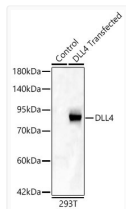
Clonality	Polyclonal
Concentration	Lot specific
Conjugation	Unconjugated
Purification	Affinity purification
Dilution Range	WB:1:500-1:1000 ELISA:Recommended starting concentration is 1 μ g/mL. Please optimize the concentration based on your specific assay requirements.
Formulation	PBS with 0.05% Proclin300, 50% Glycerol, pH 7.3.
Isotype	IgG
Molecular Weight	Protein Mw: 74kDa Observed Mw: 90kDa
Storage Instruction	Store at -20°C for up to 1 year from the date of receipt, and avoid repeat freeze-thaw cycles.

TARGET INFORMATION

Gene ID	54567
Gene Symbol	DLL4
UniProt ID	DLL4_HUMAN
Immunogen Region	27-524
Immunogen Sequence	GVFQLQLQEFINERGVLASG RPCEPGCRTFFRVCLKHFQA VVSPGPCTFGTVSTPVLGTN SFAVRDDSSGGGRNPLQLPF NFWPGTFSLIEAWHAPGD DLRPEALPPDALISKIAIQG SLAVGQNWLLDEQSTLTRL RYSYRVICSDNYGDNC SRL CKKRNDFHGHVVCQPDGNLS CLPGWTGEYCQQPICLSGCH EQNGYCSKPAECLCRPGWQG RLCNECIPHNGCRHGTCST
Specificity	Recombinant fusion protein containing a sequence corresponding to amino acids 27-524 of human DLL4 (NP_061947.1).

ADDITIONAL INFORMATION

Note **STRICTLY FOR FURTHER SCIENTIFIC RESEARCH USE ONLY (RUO). MUST NOT TO BE USED IN DIAGNOSTIC OR THERAPEUTIC APPLICATIONS.**



Western blot analysis of lysates from wild type (WT) and 293T cells transfected with DLL4 using DLL4 Rabbit polyclonal antibody (STJ11105504) at 1:1000 dilution. Secondary antibody: HRP Goat Anti-Rabbit IgG (H+L) (STJS000856) at 1:10000 dilution. Lysates/proteins: 25 μ g per lane. Blocking buffer: 3% nonfat dry milk in TBST. Detection: ECL Basic Kit. Exposure time: 20s.