

Anti-LHB antibody (21-141) (STJ11105501)

GENERAL INFORMATION

Product Type	Primary antibodies
Applications	WB/IHC-P/ELISA
Host / Source	Rabbit
Reactivity	Human

PRODUCT PROPERTIES

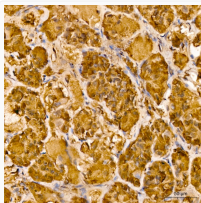
Clonality	Polyclonal
Concentration	Lot specific
Conjugation	Unconjugated
Purification	Affinity purification
Dilution Range	WB:1:500-1:1000 IHC-P:1:50-1:200 ELISA:Recommended starting concentration is 1 Mu g/mL. Please optimize the concentration based on your specific assay requirements.
Formulation	PBS with 0.05% Proclin300, 50% Glycerol, pH 7.3.
Isotype	IgG
Molecular Weight	Protein Mw: 15kDa Observed Mw: 15-30kDa
Storage Instruction	Store at -20°C for up to 1 year from the date of receipt, and avoid repeat freeze-thaw cycles.

TARGET INFORMATION

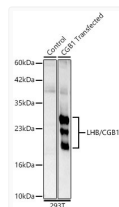
Gene ID	3972
Gene Symbol	LHB
UniProt ID	LSHB_HUMAN
Immunogen Region	21-141
Immunogen Sequence	SREPLRPWCHPINAILAVEK EGPVCITVNTTICAGYCPT MMRVLQAVLPPLPQVVCTYR DVRFESIRLPGCPRGVDPVV SFPVALSCRCGPCRRSTSDC GGPKDHLPTCDHPQLSGLLF L
Specificity	Recombinant Protein corresponding to a sequence within amino acids 21-141 of human LHB (NP_000885.1).

ADDITIONAL INFORMATION

Note STRICTLY FOR FURTHER SCIENTIFIC RESEARCH USE ONLY (RUO). MUST NOT TO BE USED IN DIAGNOSTIC OR THERAPEUTIC APPLICATIONS.



Immunohistochemistry analysis of LHB/CGB1 in paraffin-embedded Human pituitary gland tissue using LHB/CGB1 Rabbit polyclonal antibody (STJ11105501) at a dilution of 1:100 (40x lens). High pressure antigen retrieval was performed with 0.01 M Tris-EDTA buffer (pH 9.0) prior to immunohistochemistry staining.



Western blot analysis of lysates from wild type (WT) and 293T cells transfected with LHB/CGB1 using Lutropin subunit beta Rabbit polyclonal antibody (STJ11105501) at 1:800 dilution. Secondary antibody: HRP Goat Anti-Rabbit IgG (H+L) (STJS000856) at 1:10000 dilution. Lysates/proteins: 25 Mu g per lane. Blocking buffer: 3% nonfat dry milk in TBST. Detection: ECL Basic Kit. Exposure time: 45s.

