

## Anti-IGF2 antibody (70-180) (STJ11105485)

### GENERAL INFORMATION

Product Type	Primary antibodies
Applications	IF/ICC
Host / Source	Rabbit
Reactivity	Human/Mouse/Rat

### PRODUCT PROPERTIES

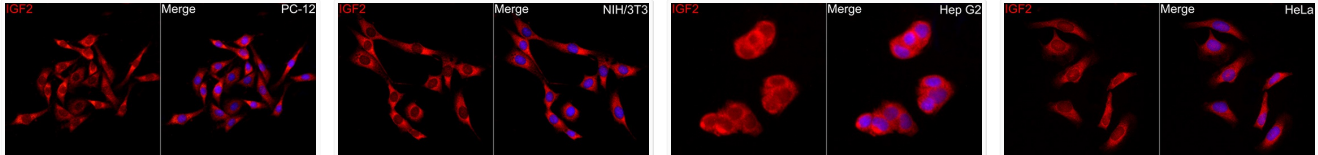
Clonality	Polyclonal
Concentration	Lot specific
Conjugation	Unconjugated
Purification	Affinity purification
Dilution Range	IF/ICC:1:50-1:200
Formulation	PBS with 0.05% Proclin300, 50% Glycerol, pH 7.3.
Isotype	IgG
Molecular Weight	Protein Mw: 20kDa/26kDa Observed Mw: Refer to figures
Storage Instruction	Store at -20°C for up to 1 year from the date of receipt, and avoid repeat freeze-thaw cycles.

### TARGET INFORMATION

Gene ID	<a href="#">3481</a>
Gene Symbol	<a href="#">IGF2</a>
UniProt ID	<a href="#">IGF2_HUMAN</a>
Immunogen Region	70-180
Immunogen Sequence	CCFRSCDLALLETYCATPAK SERDVSTPPTVLPDNFPRYP VGKFFQYDTWKQSTQRLRRG LPALLRARRGHVLAKELEAF REAKRHRPLIALPTQDPAHG GAPPEMASNRK
Specificity	A synthetic peptide corresponding to a sequence within amino acids 70-180 of human IGF2 (P01344).

### ADDITIONAL INFORMATION

Note **STRICTLY FOR FURTHER SCIENTIFIC RESEARCH USE ONLY (RUO). MUST NOT TO BE USED IN DIAGNOSTIC OR THERAPEUTIC APPLICATIONS.**



Immunofluorescence analysis of PC-12 cells using IGF2 Rabbit polyclonal antibody (STJ11105485) at dilution of 1:100 (40x lens). Secondary antibody: Cy3 Goat Anti-Rabbit IgG (H+L) at 1:500 dilution. Blue: DAPI for nuclear staining.

Immunofluorescence analysis of NIH/3T3 cells using IGF2 Rabbit polyclonal antibody (STJ11105485) at dilution of 1:100 (40x lens). Secondary antibody: Cy3 Goat Anti-Rabbit IgG (H+L) at 1:500 dilution. Blue: DAPI for nuclear staining.

Immunofluorescence analysis of HepG2 cells using IGF2 Rabbit polyclonal antibody (STJ11105485) at dilution of 1:100 (40x lens). Secondary antibody: Cy3 Goat Anti-Rabbit IgG (H+L) at 1:500 dilution. Blue: DAPI for nuclear staining.

Immunofluorescence analysis of HeLa cells using IGF2 Rabbit polyclonal antibody (STJ11105485) at dilution of 1:100 (40x lens). Secondary antibody: Cy3 Goat Anti-Rabbit IgG (H+L) at 1:500 dilution. Blue: DAPI for nuclear staining.