

Anti-SYT1 antibody (1-100) (STJ11105483)

GENERAL INFORMATION

Product Type	Primary antibodies
Applications	WB/ELISA
Host / Source	Rabbit
Reactivity	Mouse

PRODUCT PROPERTIES

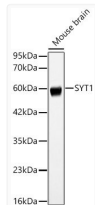
Clonality	Polyclonal
Concentration	Lot specific
Conjugation	Unconjugated
Purification	Affinity purification
Dilution Range	WB:1:1000-1:5000 ELISA:Recommended starting concentration is 1 Mu g/mL. Please optimize the concentration based on your specific assay requirements.
Formulation	PBS with 0.05% Proclin300, 50% Glycerol, pH 7.3.
Isotype	IgG
Molecular Weight	Protein Mw: 47kDa Observed Mw: 60kDa
Storage Instruction	Store at -20°C for up to 1 year from the date of receipt, and avoid repeat freeze-thaw cycles.

TARGET INFORMATION

Gene ID	6857
Gene Symbol	SYT1
UniProt ID	SYT1_HUMAN
Immunogen Region	1-100
Immunogen Sequence	MVSESHHEALAAPPVTTVAT VLP SNATEPASPGEKEDAF SKLKEKFMNELHKIPLPPWA LIAIAIVAVLLVLTCCFCIC KKCLFKKKKKKKGKEKGGKN
Specificity	A synthetic peptide corresponding to a sequence within amino acids 1-100 of human SYT1 (NP_005630.1).

ADDITIONAL INFORMATION

Note STRICTLY FOR FURTHER SCIENTIFIC RESEARCH USE ONLY (RUO). MUST NOT TO BE USED IN DIAGNOSTIC OR THERAPEUTIC APPLICATIONS.



Western blot analysis of lysates from Mouse brain using SYT1 Rabbit polyclonal antibody (STJ11105483) at 1:2000 dilution. Secondary antibody: HRP Goat Anti-Rabbit IgG (H+L) (STJS000856) at 1:10000 dilution. Lysates/proteins: 25 Mu g per lane. Blocking buffer: 3% nonfat dry milk in TBST. Detection: ECL Basic Kit. Exposure time: 20s.