

Anti-PPP2R1B antibody (502-601) (STJ11105479)

GENERAL INFORMATION

Product Type	Primary antibodies
Applications	WB/ELISA
Host / Source	Rabbit
Reactivity	Rat

PRODUCT PROPERTIES

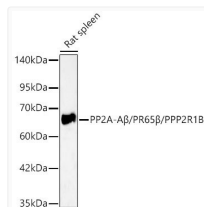
Clonality	Polyclonal
Concentration	Lot specific
Conjugation	Unconjugated
Purification	Affinity purification
Dilution Range	WB:1:500-1:1000 ELISA:Recommended starting concentration is 1 Mu g/mL. Please optimize the concentration based on your specific assay requirements.
Formulation	PBS with 0.05% Proclin300, 50% Glycerol, pH 7.3.
Isotype	IgG
Molecular Weight	Protein Mw: 52kDa/61kDa/66kDa/73kDa Observed Mw: 66kDa
Storage Instruction	Store at-20°C for up to 1 year from the date of receipt, and avoid repeat freeze-thaw cycles.

TARGET INFORMATION

Gene ID	5519
Gene Symbol	PPP2R1B
UniProt ID	2AAB_HUMAN
Immunogen Region	502-601
Immunogen Sequence	ANDPNYLHRMTTLFCINALS EACGQEITTKQMLPIVLKMA GDQVANVRFNVAKSLQKIGP ILDNTALQGEVVKPVLQKLGQ DEDMDVKYFAQEAI SVLALA
Specificity	A synthetic peptide corresponding to a sequence within amino acids 502-601 of human PP2A-A Beta/PR65 Beta/PPP2R1B (NP_002707.3).

ADDITIONAL INFORMATION

Note STRICTLY FOR FURTHER SCIENTIFIC RESEARCH USE ONLY (RUO). MUST NOT TO BE USED IN DIAGNOSTIC OR THERAPEUTIC APPLICATIONS.



Western blot analysis of lysates from Rat spleen using PP2A-A Beta/PR65 Beta/PPP2R1B Rabbit polyclonal antibody (STJ11105479) at 1:400 dilution. Secondary antibody: HRP Goat Anti-Rabbit IgG (H+L) (STJS000856) at 1:10000 dilution. Lysates/proteins: 25 Mu g per lane. Blocking buffer: 3% nonfat dry milk in TBST. Detection: ECL Basic Kit. Exposure time: 45s.