

## Anti-PARG antibody (777-976) [S5474RM] (STJ11105474)

### GENERAL INFORMATION

Product Type	Primary antibodies
Applications	WB/ELISA
Host / Source	Rabbit
Reactivity	Human/Mouse/Rat

### PRODUCT PROPERTIES

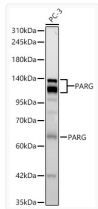
Clonality	Monoclonal
Concentration	Lot specific
Conjugation	Unconjugated
Purification	Affinity purification
Dilution Range	WB:1:2000-1:8000 ELISA:Recommended starting concentration is 1 $\mu$ g/mL. Please optimize the concentration based on your specific assay requirements.
Formulation	PBS with 0.05% Proclin300, 0.05% BSA, 50% Glycerol, pH 7.3.
Isotype	IgG
Molecular Weight	Protein Mw: 111kDa Observed Mw: 120-130kDa
Storage Instruction	Store at -20°C for up to 1 year from the date of receipt, and avoid repeat freeze-thaw cycles.

### TARGET INFORMATION

Gene ID	<a href="#">8505</a>
Gene Symbol	<a href="#">PARG</a>
UniProt ID	<a href="#">PARG_HUMAN</a>
Immunogen Region	777-976
Immunogen Sequence	HNECLIITGTEQYSEYTGYA ETYRWSRSHEDGSRDDWQR RCTEIVADALHFRFYLDQF VPEKMRRELNKAYCGFLRPG VSSENLSAVATGNWGCAGFG GDARLKALIQILAAAAAERD VVYFTFGDSELMRDIYSMHI FLTERKLTVDVYKLLRLYY NEECRNCSTPGDPKLYPFI YHAVESCAETADHSGQRTGT
Specificity	Recombinant Protein corresponding to a sequence within amino acids 777-976 of human PARG (NP_003622.2).

### ADDITIONAL INFORMATION

Note **STRICTLY FOR FURTHER SCIENTIFIC RESEARCH USE ONLY (RUO). MUST NOT TO BE USED IN DIAGNOSTIC OR THERAPEUTIC APPLICATIONS.**



Western blot analysis of lysates from PC-3 cells, using PARG Rabbit monoclonal antibody (STJ11105474) at 1:2000 dilution. Secondary antibody: HRP Goat Anti-Rabbit IgG (H+L) (STJS000856) at 1:10000 dilution. Lysates/proteins: 25 $\mu$ g per lane. Blocking buffer: 3% nonfat dry milk in TBST. Detection: ECL Basic Kit. Exposure time: 30s.