

## Anti-MRPL21 antibody (40-140) (STJ11105472)

### GENERAL INFORMATION

Product Type	Primary antibodies
Applications	WB/IHC-P/ELISA
Host / Source	Rabbit
Reactivity	Human

### PRODUCT PROPERTIES

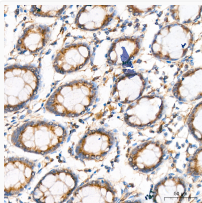
Clonality	Polyclonal
Concentration	Lot specific
Conjugation	Unconjugated
Purification	Affinity purification
Dilution Range	WB:1:500-1:1000 IHC-P:1:50-1:200 ELISA:Recommended starting concentration is 1 Mu g/mL. Please optimize the concentration based on your specific assay requirements.
Formulation	PBS with 0.05% Proclin300, 50% Glycerol, pH 7.3.
Isotype	IgG
Molecular Weight	Protein Mw: 22kDa Observed Mw: Refer to figures
Storage Instruction	Store at -20°C for up to 1 year from the date of receipt, and avoid repeat freeze-thaw cycles.

### TARGET INFORMATION

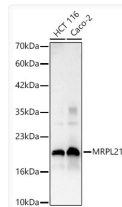
Gene ID	<a href="#">219927</a>
Gene Symbol	<a href="#">MRPL21</a>
UniProt ID	<a href="#">RM21_HUMAN</a>
Immunogen Region	40-140
Immunogen Sequence	NSQSTSYPGYVPKTSLSPP PWPEVVLDPVEETRRHAEV VKKVNEMIVTGQYGRFAVV HFASRQWKVTSDELILIGNE LDLACGERIRLEKVVLLVGAD N
Specificity	A synthetic peptide corresponding to a sequence within amino acids 40-140 of human MRPL21 (NP_852615.1).

### ADDITIONAL INFORMATION

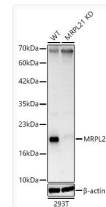
Note **STRICTLY FOR FURTHER SCIENTIFIC RESEARCH USE ONLY (RUO). MUST NOT TO BE USED IN DIAGNOSTIC OR THERAPEUTIC APPLICATIONS.**



Immunohistochemistry analysis of MRPL21 in paraffin-embedded human colon tissue using [KD Validated] MRPL21 Rabbit polyclonal antibody (STJ11105472) at a dilution of 1:100 (40x lens). High pressure antigen retrieval was performed with 0.01 M citrate buffer (pH 6.0) prior to immunohistochemistry staining.



Western blot analysis of various lysates using MRPL21 Rabbit polyclonal antibody (STJ11105472) at 1:1000 dilution. Secondary antibody: HRP Goat Anti-Rabbit IgG (H+L) (STJS000856) at 1:10000 dilution. Lysates/proteins: 25 Mu g per lane. Blocking buffer: 3% nonfat dry milk in TBST. Detection: ECL Basic Kit. Exposure time: 90s.



Western blot analysis of lysates from wild type (WT) and MRPL21 knockdown (KD) 293T cells using MRPL21 Rabbit polyclonal antibody (STJ11105472) at 1:1000 dilution. Secondary antibody:HRP Goat Anti-Rabbit IgG (H+L) (STJS000856) at 1:10000 dilution. Lysates/proteins: 25 Mu g per lane. Blocking buffer: 3% nonfat dry milk in TBST. Detection: ECL Basic Kit. Exposure time: 90s.