

Anti-GPAM antibody (630-730) (STJ11105470)

GENERAL INFORMATION

Product Type	Primary antibodies
Applications	WB/ELISA
Host / Source	Rabbit
Reactivity	Mouse/Rat

PRODUCT PROPERTIES

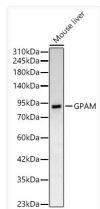
Clonality	Polyclonal
Concentration	Lot specific
Conjugation	Unconjugated
Purification	Affinity purification
Dilution Range	WB:1:500-1:1000 ELISA:Recommended starting concentration is 1 μ g/mL. Please optimize the concentration based on your specific assay requirements.
Formulation	PBS with 0.05% Proclin300, 50% Glycerol, pH 7.3.
Isotype	IgG
Molecular Weight	Protein Mw: 93kDa Observed Mw: 90-93kDa
Storage Instruction	Store at -20°C for up to 1 year from the date of receipt, and avoid repeat freeze-thaw cycles.

TARGET INFORMATION

Gene ID	57678
Gene Symbol	GPAM
UniProt ID	GPAT1_HUMAN
Immunogen Region	630-730
Immunogen Sequence	GTISLPCQTFYQVCHETVGK FIQYGILTVAEHDDQEDISP SLAEQQWDKKLPEPLSWRSD EEEDSDFGEEQRDCYLKVS QSKEHQFIFLQRLGPLL E
Specificity	A synthetic peptide corresponding to a sequence within amino acids 630-730 of human GPAM (NP_065969.3).

ADDITIONAL INFORMATION

Note STRICTLY FOR FURTHER SCIENTIFIC RESEARCH USE ONLY (RUO). MUST NOT TO BE USED IN DIAGNOSTIC OR THERAPEUTIC APPLICATIONS.



Western blot analysis of lysates from Mouse liver using GPAM Rabbit polyclonal antibody (STJ11105470) at 1:1000 dilution. Secondary antibody:HRP Goat Anti-Rabbit IgG (H+L) (STJS000856) at 1:10000 dilution. Lysates/proteins: 25 μ g per lane. Blocking buffer: 3% nonfat dry milk in TBST. Detection:ECL Basic Kit. Exposure time:5s.