

Anti-MRPL11 antibody (91-192) (STJ11105464)

GENERAL INFORMATION

Product Type	Primary antibodies
Applications	WB/IP/ELISA
Host / Source	Rabbit
Reactivity	Human

PRODUCT PROPERTIES

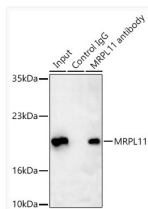
Clonality	Polyclonal
Concentration	Lot specific
Conjugation	Unconjugated
Purification	Affinity purification
Dilution Range	WB:1:500-1:1000 IP:0.5 Mu g-4 Mu g antibody for 200 Mu g-400 Mu g extracts of whole cells ELISA:Recommended starting concentration is 1 Mu g/mL. Please optimize the concentration based on your specific assay requirements.
Formulation	PBS with 0.05% Proclin300, 50% Glycerol, pH 7.3.
Isotype	IgG
Molecular Weight	Protein Mw: 18kDa/19kDa/20kDa Observed Mw: 21kDa
Storage Instruction	Store at -20°C for up to 1 year from the date of receipt, and avoid repeat freeze-thaw cycles.

TARGET INFORMATION

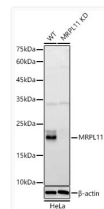
Gene ID	65003
Gene Symbol	MRPL11
UniProt ID	RM11_HUMAN
Immunogen Region	91-192
Immunogen Sequence	LKAAAGIEKGARQTGKEVAG LVTLKHVYEIARIKAQDEAF ALQDVP LSSVVR SIIGSARS LGI R VVKDLSSEELAAFQKE RAIFLAAQKEADLAAQEEAA KK
Specificity	A synthetic peptide corresponding to a sequence within amino acids 91-192 of human MRPL11 (NP_057134.1).

ADDITIONAL INFORMATION

Note **STRICTLY FOR FURTHER SCIENTIFIC RESEARCH USE ONLY (RUO). MUST NOT TO BE USED IN DIAGNOSTIC OR THERAPEUTIC APPLICATIONS.**



Immunoprecipitation of MRPL11 in 500 µg extracts from HeLa cells using 3 µg MRPL11 Rabbit polyclonal antibody (STJ11105464). Western blot analysis was performed using MRPL11 Rabbit polyclonal antibody (STJ11105464) at 1:1000 dilution.



Western blot analysis of lysates from wild type (WT) and MRPL11 knockdown (KD) HeLa cells using MRPL11 Rabbit polyclonal antibody (STJ11105464) at 1:1000 dilution. Secondary antibody:HRP Goat Anti-Rabbit IgG (H+L) (STJS000856) at 1:10000 dilution. Lysates/proteins: 25 µg per lane. Blocking buffer: 3% nonfat dry milk in TBST. Detection:ECL Basic Kit. Exposure time: 90s.