

## Anti-CYB5R3 antibody (27-301) (STJ11105448)

### GENERAL INFORMATION

Product Type	Primary antibodies
Applications	WB/ELISA
Host / Source	Rabbit
Reactivity	Human/Rat

### PRODUCT PROPERTIES

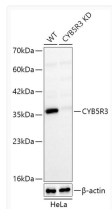
Clonality	Polyclonal
Concentration	Lot specific
Conjugation	Unconjugated
Purification	Affinity purification
Dilution Range	WB:1:500-1:1000 ELISA:Recommended starting concentration is 1 µg/mL. Please optimize the concentration based on your specific assay requirements.
Formulation	PBS with 0.05% Proclin300, 50% Glycerol, pH 7.3.
Isotype	IgG
Molecular Weight	Protein Mw: 31kDa/34kDa/38kDa Observed Mw: 30-38kDa/38kDa
Storage Instruction	Store at -20°C for up to 1 year from the date of receipt, and avoid repeat freeze-thaw cycles.

### TARGET INFORMATION

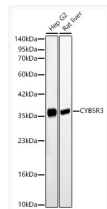
Gene ID	<a href="#">1727</a>
Gene Symbol	<a href="#">CYB5R3</a>
UniProt ID	<a href="#">NB5R3_HUMAN</a>
Immunogen Region	27-301
Immunogen Sequence	FQRSTPAITLESPIKDYPLR LIDREIISHDTRRRFRALPS PQHILGLPVGQHIYLSARID GNLVRPYTPISSDDDKGFV DLVIKVFYKDTHPKFPAGGK MSQYLESMQIGDTIEFRGPS GLLVYQGGKGFARPDKKSNIPIRTVKSVMGIAGGTGTP MLQVIRAIMKDPDDHTVCHL LFANQTEKDILLRPELEELR NKHSARFKLWYTLDRAPEAW DYGGQGFVNEEMIRDHLPPP
Specificity	Recombinant Protein corresponding to a sequence within amino acids 27-301 of human CYB5R3 (NM_000398.7).

### ADDITIONAL INFORMATION

Note **STRICTLY FOR FURTHER SCIENTIFIC RESEARCH USE ONLY (RUO). MUST NOT TO BE USED IN DIAGNOSTIC OR THERAPEUTIC APPLICATIONS.**



Western blot analysis of lysates from wild type (WT) and CYB5R3 knockdown (KD) HeLa cells using [KD Validated] CYB5R3 Rabbit polyclonal antibody (STJ11105448) at 1:1000 dilution. Secondary antibody:HRP Goat Anti-Rabbit IgG (H+L) (STJS000856) at 1:10000 dilution. Lysates/proteins: 25 µg per lane. Blocking buffer: 3% nonfat dry milk in TBST. Detection:ECL Basic Kit. Exposure time: 10s.



Western blot analysis of various lysates using [KD Validated] CYB5R3 Rabbit polyclonal antibody (STJ11105448) at 1:1000 dilution. Secondary antibody:HRP Goat Anti-Rabbit IgG (H+L) (STJS000856) at 1:10000 dilution. Lysates/proteins: 25 µg per lane. Blocking buffer: 3% nonfat dry milk in TBST. Detection:ECL Basic Kit. Exposure time: 10s.