

Anti-ACSL1 antibody (590-698) (STJ11105445)

GENERAL INFORMATION

Product Type	Primary antibodies
Applications	WB/ELISA
Host / Source	Rabbit
Reactivity	Mouse

PRODUCT PROPERTIES

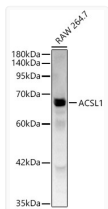
Clonality	Polyclonal
Concentration	Lot specific
Conjugation	Unconjugated
Purification	Affinity purification
Dilution Range	WB:1:1000-1:5000 ELISA:Recommended starting concentration is 1 μ g/mL. Please optimize the concentration based on your specific assay requirements.
Formulation	PBS with 0.05% Proclin300, 50% Glycerol, pH 7.3.
Isotype	IgG
Molecular Weight	Protein Mw: 76kDa/77kDa Observed Mw: 68kDa
Storage Instruction	Store at -20°C for up to 1 year from the date of receipt, and avoid repeat freeze-thaw cycles.

TARGET INFORMATION

Gene ID	2180
Gene Symbol	ACSL1
UniProt ID	ACSL1_HUMAN
Immunogen Region	590-698
Immunogen Sequence	GESLQAFLIAIVPDVETLC SWAQKRGFEFGSFEELCRNKD VKKAILEDMVRVLGKDSGLKP FEQVKGITLHPELFSIDNGL LTPTMKAKRPELRNYFRSQI DDLYSTIKV
Specificity	A synthetic peptide corresponding to a sequence within amino acids 590-698 of human ACSL1 (NP_001986.2).

ADDITIONAL INFORMATION

Note STRICTLY FOR FURTHER SCIENTIFIC RESEARCH USE ONLY (RUO). MUST NOT TO BE USED IN DIAGNOSTIC OR THERAPEUTIC APPLICATIONS.



Western blot analysis of lysates from RAW 264.7 cells using ACSL1 Rabbit polyclonal antibody (STJ11105445) at 1:2000 dilution. Secondary antibody:HRP Goat Anti-Rabbit IgG (H+L) (STJS000856) at 1:10000 dilution. Lysates/proteins: 25 μ g per lane. Blocking buffer: 3% nonfat dry milk in TBST. Detection:ECL Basic Kit. Exposure time:30s.