

Anti-IGF1 antibody (65-165) (STJ11105441)

GENERAL INFORMATION

| | |
|---------------|--------------------|
| Product Type | Primary antibodies |
| Applications | WB |
| Host / Source | Rabbit |
| Reactivity | Mouse/Rat |

PRODUCT PROPERTIES

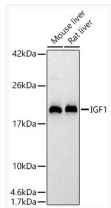
| | |
|---------------------|--|
| Clonality | Polyclonal |
| Concentration | Lot specific |
| Conjugation | Unconjugated |
| Purification | Affinity purification |
| Dilution Range | WB:1:500-1:1000 |
| Formulation | PBS with 0.05% Proclin300, 50% Glycerol, pH 7.3. |
| Isotype | IgG |
| Molecular Weight | Protein Mw: 22kDa Observed Mw: 20kDa |
| Storage Instruction | Store at -20°C for up to 1 year from the date of receipt, and avoid repeat freeze-thaw cycles. |

TARGET INFORMATION

| | |
|--------------------|---|
| Gene ID | 3479 |
| Gene Symbol | IGF1 |
| UniProt ID | IGF1_HUMAN |
| Immunogen Region | 65-165 |
| Immunogen Sequence | VCGDRGFYFNKPTGYGSSSR RAPQTGIVDECCFRSCDLRR LEMYCAPLKPAKSARSVRAQ RHTDMPKTQKYQPPSTNKNT KSQRRKGWPKTHPGGEQKEG T |
| Specificity | A synthetic peptide corresponding to a sequence within amino acids 65-165 of human IGF1 (NP_000609.1). |

ADDITIONAL INFORMATION

Note STRICTLY FOR FURTHER SCIENTIFIC RESEARCH USE ONLY (RUO). MUST NOT TO BE USED IN DIAGNOSTIC OR THERAPEUTIC APPLICATIONS.



Western blot analysis of various lysates using IGF1 Rabbit polyclonal antibody (STJ11105441) at 1:1000 dilution. Secondary antibody: HRP Goat Anti-Rabbit IgG (H+L) (STJS000856) at 1:10000 dilution. Lysates/ proteins: 25 μ g per lane. Blocking buffer: 3 % nonfat dry milk in TBST. Detection: ECL Basic Kit. Exposure time: 30s.