

Anti-TRIM21 antibody (86-334) [S5437RM] (STJ11105437)

GENERAL INFORMATION

Product Type	Primary antibodies
Applications	WB/ELISA
Host / Source	Rabbit
Reactivity	Human/Rat

PRODUCT PROPERTIES

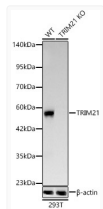
Clonality	Monoclonal
Concentration	Lot specific
Conjugation	Unconjugated
Purification	Affinity purification
Dilution Range	WB:1:1000-1:2000 ELISA:Recommended starting concentration is 1 Mu g/mL. Please optimize the concentration based on your specific assay requirements.
Formulation	PBS with 0.05% Proclin300, 0.05% BSA, 50% Glycerol, pH 7.3.
Isotype	IgG
Molecular Weight	Protein Mw: 54kDa Observed Mw: 54kDa, 60kDa
Storage Instruction	Store at -20°C for up to 1 year from the date of receipt, and avoid repeat freeze-thaw cycles.

TARGET INFORMATION

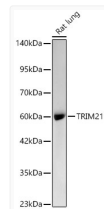
Gene ID	6737
Gene Symbol	TRIM21
UniProt ID	R052_HUMAN
Immunogen Region	86-334
Immunogen Sequence	GTQGERCAVHGERLHLFCEK DGKALCWVCAQSRKHRDHAM VPLEEAAQEYQEKLQVALGE LRRKQELAEKLEVEIAIKRA DWKKTIVETQKSRIHAEFVQQ KNFLVEEEQRQLQELEKDER EQLRILGEKEAKLAQSQAL QELISELDRRCHSSALELLQ EVIIVLRSSESWNLKDLDTIT SPELRSVCHVPLGKMLRRTC AVHITLDPDTANPWLILSED RRQVRLGDTQQSIPGNEER
Specificity	Recombinant Protein corresponding to a sequence within amino acids 86-334 of human TRIM21 (NP_003361.1).

ADDITIONAL INFORMATION

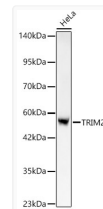
Note **STRICTLY FOR FURTHER SCIENTIFIC RESEARCH USE ONLY (RUO). MUST NOT TO BE USED IN DIAGNOSTIC OR THERAPEUTIC APPLICATIONS.**



Western blot analysis of lysates from wild type (WT) and TRIM21 knockout (KO) 293T (KO) cells, using TRIM21 Rabbit monoclonal antibody (STJ11105437) at 1:1000 dilution. Secondary antibody: HRP Goat Anti-Rabbit IgG (H+L) (STJS000856) at 1:10000 dilution. Lysates/proteins: 25ug per lane. Blocking buffer: 3% nonfat dry milk in TBST. Detection: ECL Basic Kit. Exposure time: 45s.



Western blot analysis of lysates from Rat lung, using TRIM21 Rabbit monoclonal antibody (STJ11105437) at 1:1000 dilution. Secondary antibody: HRP Goat Anti-Rabbit IgG (H+L) (STJS000856) at 1:10000 dilution. Lysates/proteins: 25ug per lane. Blocking buffer: 3% nonfat dry milk in TBST. Detection: ECL Basic Kit. Exposure time: 90s.



Western blot analysis of lysates from HeLa cells, using TRIM21 Rabbit monoclonal antibody (STJ11105437) at 1:1000 dilution. Secondary antibody: HRP Goat Anti-Rabbit IgG (H+L) (STJS000856) at 1:10000 dilution. Lysates/proteins: 25ug per lane. Blocking buffer: 3% nonfat dry milk in TBST. Detection: ECL Basic Kit. Exposure time: 45s.