

Anti-CD276 antibody (29-245) (STJ11105431)

GENERAL INFORMATION

Product Type	Primary antibodies
Applications	WB/IHC-P/ELISA
Host / Source	Rabbit
Reactivity	Human

PRODUCT PROPERTIES

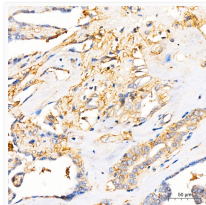
Clonality	Polyclonal
Concentration	Lot specific
Conjugation	Unconjugated
Purification	Affinity purification
Dilution Range	WB:1:1000-1:5000 IHC-P:1:50-1:200 ELISA:Recommended starting concentration is 1 µg/mL. Please optimize the concentration based on your specific assay requirements.
Formulation	PBS with 0.05% Proclin300, 50% Glycerol, pH 7.3.
Isotype	IgG
Molecular Weight	Protein Mw: 33kDa Observed Mw: 100kDa
Storage Instruction	Store at -20°C for up to 1 year from the date of receipt, and avoid repeat freeze-thaw cycles.

TARGET INFORMATION

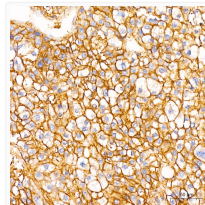
Gene ID	80381
Gene Symbol	CD276
UniProt ID	CD276_HUMAN
Immunogen Region	29-245
Immunogen Sequence	LEVQVPEDPVVALVGTDTLCCSFSPEPGFSLAQLNLIWQLTDTKQLVHSFAEGQDQGSAYANRTALFPDLLAQGNASLR LQRVVRVADEGSFTCFVSIRD FGSAAVSLQVAAPYSKPSMT LEPNKDLRPGDVTITCSSY RGYPEAEVFWQDGGVPLTG NVTTSQMANEQGLFDVHVSRLRVVLGANGTYSCLVRNPVLQ QDAHGSVTITGGQPMTFP
Specificity	Recombinant Protein corresponding to a sequence within amino acids 29-245 of human CD276 (NP_079516.1).

ADDITIONAL INFORMATION

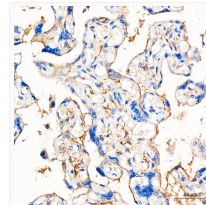
Note **STRICTLY FOR FURTHER SCIENTIFIC RESEARCH USE ONLY (RUO). MUST NOT TO BE USED IN DIAGNOSTIC OR THERAPEUTIC APPLICATIONS.**



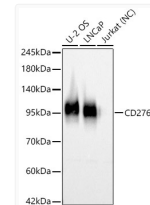
Immunohistochemistry analysis of CD276 in paraffin-embedded human thyroid cancer tissue using CD276 Rabbit polyclonal antibody (STJ11105431) at a dilution of 1:200 (40x lens). High pressure antigen retrieval was performed with 0.01 M citrate buffer (pH 6.0) prior to immunohistochemistry staining.



Immunohistochemistry analysis of CD276 in paraffin-embedded human liver cancer tissue using CD276 Rabbit polyclonal antibody (STJ11105431) at a dilution of 1:200 (40x lens). High pressure antigen retrieval was performed with 0.01 M citrate buffer (pH 6.0) prior to immunohistochemistry staining.



Immunohistochemistry analysis of CD276 in paraffin-embedded human placenta tissue using CD276 Rabbit polyclonal antibody (STJ11105431) at a dilution of 1:200 (40x lens). High pressure antigen retrieval was performed with 0.01 M citrate buffer (pH 6.0) prior to immunohistochemistry staining.



Western blot analysis of various lysates, using CD276 Rabbit polyclonal antibody (STJ11105431) at 1:2000 dilution. Secondary antibody: HRP Goat Anti-Rabbit IgG (H+L) (STJS000856) at 1:10000 dilution. Lysates/proteins: 25µg per lane. Blocking buffer: 3% nonfat dry milk in TBST. Detection: ECL Basic Kit. Negative control (NC) : Jurkat. Exposure time: 1s.