

## Anti-XPNPEP3 antibody (32-230) (STJ11105412)

### GENERAL INFORMATION

Product Type	Primary antibodies
Applications	WB/ELISA
Host / Source	Rabbit
Reactivity	Human/Mouse

### PRODUCT PROPERTIES

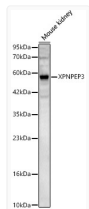
Clonality	Polyclonal
Concentration	Lot specific
Conjugation	Unconjugated
Purification	Affinity purification
Dilution Range	WB:1:500-1:1000 ELISA:Recommended starting concentration is 1 µg/mL. Please optimize the concentration based on your specific assay requirements.
Formulation	PBS with 0.05% Proclin300, 50% Glycerol, pH 7.3.
Isotype	IgG
Molecular Weight	Protein Mw: 31kDa/32kDa/48kDa/54kDa/57kDa Observed Mw: 57kDa
Storage Instruction	Store at -20°C for up to 1 year from the date of receipt, and avoid repeat freeze-thaw cycles.

### TARGET INFORMATION

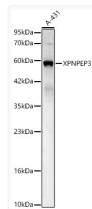
Gene ID	<a href="#">63929</a>
Gene Symbol	<a href="#">XPNPEP3</a>
UniProt ID	<a href="#">XPP3_HUMAN</a>
Immunogen Region	32-230
Immunogen Sequence	SLQPVPERRIPNRYLGQPSP FTHPHLLRPGEVTPGLSQVE YALRRHKLMSLIQKEAQQQS GTDQTVVVLNSNPTYYSNDI PYTFHQDNNFLYLCGFQEPD SILVLSLPGKQLPSHKAIL FVPRRDPRELWDGPRSGTD GAIALTGVDEAYTLEEFQHL LPKMKAETNMVWYDWMRPSH AQLHSDYMQLTEAKAKSK
Specificity	Recombinant fusion protein containing a sequence corresponding to amino acids 32-230 of human XPNPEP3 (NP_071381.1).

### ADDITIONAL INFORMATION

Note **STRICTLY FOR FURTHER SCIENTIFIC RESEARCH USE ONLY (RUO). MUST NOT TO BE USED IN DIAGNOSTIC OR THERAPEUTIC APPLICATIONS.**



Western blot analysis of lysates from Mouse kidney, using XPNPEP3 Rabbit polyclonal antibody (STJ11105412) at 1:600 dilution. Secondary antibody: HRP Goat Anti-Rabbit IgG (H+L) (STJS000856) at 1:10000 dilution. Lysates/proteins: 25µg per lane. Blocking buffer: 3% nonfat dry milk in TBST. Detection: ECL Basic Kit. Exposure time: 90s.



Western blot analysis of lysates from A-431 cells, using XPNPEP3 Rabbit polyclonal antibody (STJ11105412) at 1:600 dilution. Secondary antibody: HRP Goat Anti-Rabbit IgG (H+L) (STJS000856) at 1:10000 dilution. Lysates/proteins: 25µg per lane. Blocking buffer: 3% nonfat dry milk in TBST. Detection: ECL Basic Kit. Exposure time: 60s.