

## Anti-nm23 antibody (1-152) (STJ11105407)

### GENERAL INFORMATION

Product Type	Primary antibodies
Applications	IHC-P/ELISA
Host / Source	Rabbit
Reactivity	Human/Rat

### PRODUCT PROPERTIES

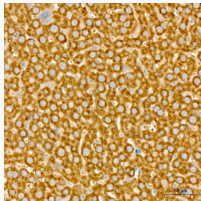
Clonality	Polyclonal
Concentration	Lot specific
Conjugation	Unconjugated
Purification	Affinity purification
Dilution Range	IHC-P:1:50-1:200 ELISA:Recommended starting concentration is 1 µg/mL. Please optimize the concentration based on your specific assay requirements.
Formulation	PBS with 0.05% Proclin300, 50% Glycerol, pH 7.3.
Isotype	IgG
Molecular Weight	Protein Mw: 17kDa Observed Mw: Refer to figures
Storage Instruction	Store at -20°C for up to 1 year from the date of receipt, and avoid repeat freeze-thaw cycles.

### TARGET INFORMATION

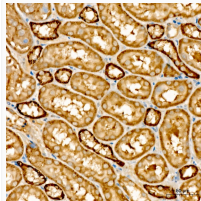
Gene ID	<a href="#">4830</a> <a href="#">4831</a>
Gene Symbol	<a href="#">NME1</a> <a href="#">NME2</a>
UniProt ID	<a href="#">NDKA_HUMAN</a> <a href="#">NDKB_HUMAN</a>
Immunogen Region	1-152
Immunogen Sequence	MANCERTFIAIKPDGVQRGL VGEIIKRFEQKGFRLVGLKF MQASEDLLKEHYVDLKDPRF FAGLVKYMHSPPVAMVWEG LNVVKTGRVMLGETNPADSK PGTIRGDFCIQVGRNIIHGS DSVESAEKEIGLWFHPEELV DYTSCAQNIWIYE
Specificity	Recombinant fusion protein containing a sequence corresponding to amino acids 1-152 of human nm23 (NP_000260.1/NP_002503.1).

### ADDITIONAL INFORMATION

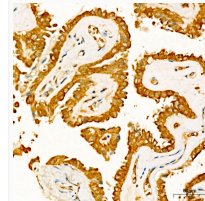
Note **STRICTLY FOR FURTHER SCIENTIFIC RESEARCH USE ONLY (RUO). MUST NOT TO BE USED IN DIAGNOSTIC OR THERAPEUTIC APPLICATIONS.**



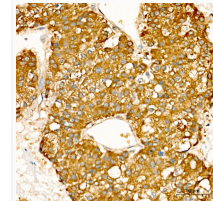
Immunohistochemistry analysis of paraffin-embedded rat liver using nm23 Rabbit polyclonal antibody (STJ11105407) at dilution of 1:200 (40x lens). Perform high pressure antigen retrieval with 10 mM citrate buffer pH 6.0 before commencing with immunohistochemistry staining protocol.



Immunohistochemistry analysis of paraffin-embedded rat kidney using nm23 Rabbit polyclonal antibody (STJ11105407) at dilution of 1:200 (40x lens). Perform high pressure antigen retrieval with 10 mM citrate buffer pH 6.0 before commencing with immunohistochemistry staining protocol.



Immunohistochemistry analysis of paraffin-embedded human thyroid cancer using nm23 Rabbit polyclonal antibody (STJ11105407) at dilution of 1:200 (40x lens). Perform high pressure antigen retrieval with 10 mM citrate buffer pH 6.0 before commencing with immunohistochemistry staining protocol.



Immunohistochemistry analysis of paraffin-embedded human liver cancer using nm23 Rabbit polyclonal antibody (STJ11105407) at dilution of 1:200 (40x lens). Perform high pressure antigen retrieval with 10 mM citrate buffer pH 6.0 before commencing with immunohistochemistry staining protocol.