

## Anti-CCAR2 antibody (1-100) (STJ11105401)

### GENERAL INFORMATION

Product Type	Primary antibodies
Applications	WB/IHC-P/ELISA
Host / Source	Rabbit
Reactivity	Human/Mouse/Rat

### PRODUCT PROPERTIES

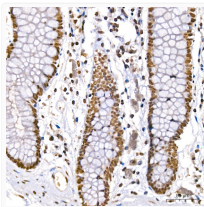
Clonality	Polyclonal
Concentration	Lot specific
Conjugation	Unconjugated
Purification	Affinity purification
Dilution Range	WB:1:1000-1:5000 IHC-P:1:50-1:200 ELISA:Recommended starting concentration is 1 µg/mL. Please optimize the concentration based on your specific assay requirements.
Formulation	PBS with 0.05% Proclin300, 50% Glycerol, pH 7.3.
Isotype	IgG
Molecular Weight	Protein Mw: 102kDa/103kDa Observed Mw: 130kDa
Storage Instruction	Store at -20°C for up to 1 year from the date of receipt, and avoid repeat freeze-thaw cycles.

### TARGET INFORMATION

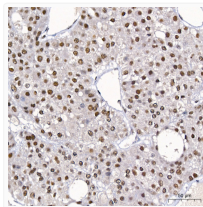
Gene ID	<a href="#">57805</a>
Gene Symbol	<a href="#">CCAR2</a>
UniProt ID	<a href="#">CCAR2_HUMAN</a>
Immunogen Region	1-100
Immunogen Sequence	MSQFKRQRINPLPGGRNFSG TASTSLLGPPPGLLTPPVAT ELSQNRHLQGGEKQRVFTG IVTSLHDYFGVVDEEVFFQL SVVKGRLPQLGKVLVKAAY
Specificity	Recombinant fusion protein containing a sequence corresponding to amino acids 1-100 of human CCAR2/DBC1 (NP_066997.3).

### ADDITIONAL INFORMATION

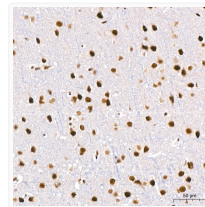
Note STRICTLY FOR FURTHER SCIENTIFIC RESEARCH USE ONLY (RUO). MUST NOT TO BE USED IN DIAGNOSTIC OR THERAPEUTIC APPLICATIONS.



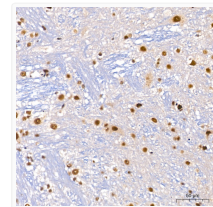
Immunohistochemistry analysis of CCAR2/DBC1 in paraffin-embedded Human colon tissue using CCAR2/DBC1 Rabbit polyclonal antibody (STJ11105401) at a dilution of 1:200 (40x lens). High pressure antigen retrieval was performed with 0.01 M citrate buffer (pH 6.0) prior to immunohistochemistry staining.



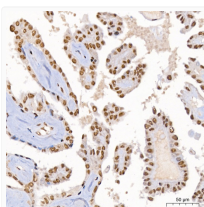
Immunohistochemistry analysis of CCAR2/DBC1 in paraffin-embedded Human liver cancer tissue using CCAR2/DBC1 Rabbit polyclonal antibody (STJ11105401) at a dilution of 1:200 (40x lens). High pressure antigen retrieval was performed with 0.01 M citrate buffer (pH 6.0) prior to immunohistochemistry staining.



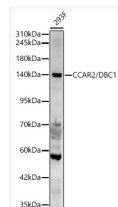
Immunohistochemistry analysis of CCAR2/DBC1 in paraffin-embedded Rat brain tissue using CCAR2/DBC1 Rabbit polyclonal antibody (STJ11105401) at a dilution of 1:200 (40x lens). High pressure antigen retrieval was performed with 0.01 M citrate buffer (pH 6.0) prior to immunohistochemistry staining.



Immunohistochemistry analysis of CCAR2/DBC1 in paraffin-embedded Mouse brain tissue using CCAR2/DBC1 Rabbit polyclonal antibody (STJ11105401) at a dilution of 1:200 (40x lens). High pressure antigen retrieval was performed with 0.01 M citrate buffer (pH 6.0) prior to immunohistochemistry staining.



Immunohistochemistry analysis of CCAR2/DBC1 in paraffin-embedded Human thyroid tissue using CCAR2/DBC1 Rabbit polyclonal antibody (STJ11105401) at a dilution of 1:200 (40x lens). High pressure antigen retrieval was performed with 0.01 M citrate buffer (pH 6.0) prior to immunohistochemistry staining.



Western blot analysis of lysates from 293F cells, using CCAR2/DBC1 Rabbit polyclonal antibody (STJ11105401) at 1:2000 dilution. Secondary antibody: HRP Goat Anti-Rabbit IgG (H+L) (STJS000856) at 1:10000 dilution. Lysates/proteins: 25µg per lane. Blocking buffer: 3% nonfat dry milk in TBST. Detection: ECL Basic Kit. Exposure time: 90s.