

Anti-C1qa antibody (23-245) (STJ11105385)

GENERAL INFORMATION

Product Type	Primary antibodies
Applications	WB/IHC-P/IF/ICC/ELISA
Host / Source	Rabbit
Reactivity	Human/Mouse/Rat

PRODUCT PROPERTIES

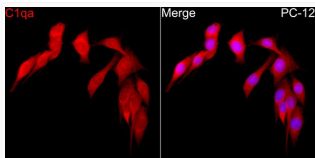
Clonality	Polyclonal
Concentration	Lot specific
Conjugation	Unconjugated
Purification	Affinity purification
Dilution Range	WB:1:1000-1:5000 IHC-P:1:500-1:1000 IF/CC:1:100-1:500 ELISA:Recommended starting concentration is 1 Mu g/mL. Please optimize the concentration based on your specific assay requirements.
Formulation	PBS with 0.05% Proclin300, 50% Glycerol, pH 7.3.
Isotype	IgG
Molecular Weight	Protein Mw: 26kDa Observed Mw: 30kDa/
Storage Instruction	Store at -20°C for up to 1 year from the date of receipt, and avoid repeat freeze-thaw cycles.

TARGET INFORMATION

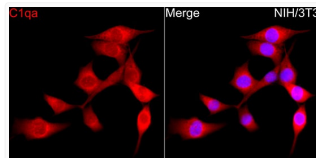
Gene ID	12259
Gene Symbol	C1qa
UniProt ID	C1QA_MOUSE
Immunogen Region	23-245
Immunogen Sequence	EDVCRAPNGKDGAPGNPGRP GRPGLKGERGEPGAAGIRTG IRGFKGDGPGESGPPGKPGNV GLPGPSGPLGDSGPQGLKGV KGNPGNIRDQPRPAFSAIRQ NPMTLGNVVIFDKVLTNQES PYQNHTGRFICAVPGFYFNF FQVISKWDLCLFIKSSSGGQ PRDLSFSNTNNKGLFQVLA GGTVLQLRRGDEVWIEKDPA KGRIYQGTEADSIKSGFLIF PSA
Specificity	Recombinant fusion protein containing a sequence corresponding to amino acids 23-245 of mouse C1qa (NP_031598.2).

ADDITIONAL INFORMATION

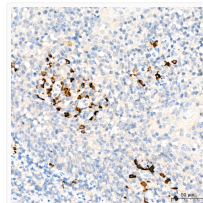
Note **STRICTLY FOR FURTHER SCIENTIFIC RESEARCH USE ONLY (RUO). MUST NOT TO BE USED IN DIAGNOSTIC OR THERAPEUTIC APPLICATIONS.**



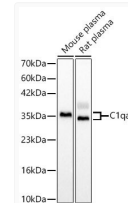
Immunofluorescence analysis of PC-12 cells using C1qa Rabbit polyclonal antibody (STJ11105385) at dilution of 1:300 (40x lens). Secondary antibody: Cy3 Goat Anti-Rabbit IgG (H+L) at 1:500 dilution. Blue: DAPI for nuclear staining.



Immunofluorescence analysis of NIH/3T3 cells using C1qa Rabbit polyclonal antibody (STJ11105385) at dilution of 1:300 (40x lens). Secondary antibody: Cy3 Goat Anti-Rabbit IgG (H+L) at 1:500 dilution. Blue: DAPI for nuclear staining.



Immunohistochemistry analysis of C1qa in paraffin-embedded Human tonsil tissue using C1qa Rabbit polyclonal antibody (STJ11105385) at a dilution of 1:800 (40x lens). High pressure antigen retrieval was performed with 0.01 M citrate buffer (pH 6.0) prior to immunohistochemistry staining.



Western blot analysis of various lysates using C1qa Rabbit polyclonal antibody (STJ11105385) at 1:2000 dilution. Secondary antibody: HRP Goat Anti-Rabbit IgG (H+L) (STJS000856) at 1:10000 dilution. Lysates/ proteins: 25 Mu g per lane. Blocking buffer: 3 % nonfat dry milk in TBST. Detection: ECL Basic Kit. Exposure time: 1s.