

Anti-COX5A antibody (1-150) (STJ11105366)

GENERAL INFORMATION

Product Type	Primary antibodies
Applications	WB/IHC-P/ELISA
Host / Source	Rabbit
Reactivity	Human/Mouse/Rat

PRODUCT PROPERTIES

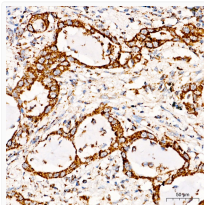
Clonality	Polyclonal
Concentration	Lot specific
Conjugation	Unconjugated
Purification	Affinity purification
Dilution Range	WB:1:1000-1:5000 IHC-P:1:50-1:200 ELISA:Recommended starting concentration is 1 Mu g/mL. Please optimize the concentration based on your specific assay requirements.
Formulation	PBS with 0.05% Proclin300, 50% Glycerol, pH 7.3.
Isotype	IgG
Molecular Weight	Protein Mw: 16kDa Observed Mw: 15kDa
Storage Instruction	Store at -20°C for up to 1 year from the date of receipt, and avoid repeat freeze-thaw cycles.

TARGET INFORMATION

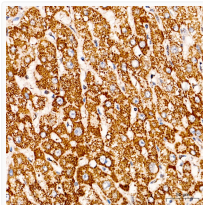
Gene ID	9377
Gene Symbol	COX5A
UniProt ID	COX5A_HUMAN
Immunogen Region	1-150
Immunogen Sequence	MLGAALRRCAVAATTRADPR GLLHSARTPGPAVAIQSVRC YSHGSQETDEEFDARWVTYF NKPDIDAWELRKGINTLVTY DMVPEPKIIDAALRACRRLN DFASTVRILEVVKDKAGPHK EIYPYVIQELRPTLNELGIS TPEELGLDKV
Specificity	Recombinant fusion protein containing a sequence corresponding to amino acids 1-150 of human COX5A (NP_004246.2).

ADDITIONAL INFORMATION

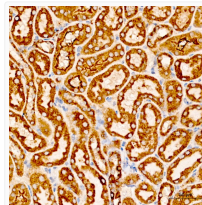
Note **STRICTLY FOR FURTHER SCIENTIFIC RESEARCH USE ONLY (RUO). MUST NOT TO BE USED IN DIAGNOSTIC OR THERAPEUTIC APPLICATIONS.**



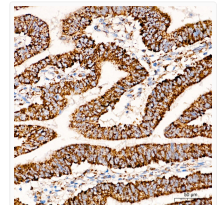
Immunohistochemistry analysis of COX5A in paraffin-embedded human lung cancer tissue using [KO Validated] COX5A Rabbit polyclonal antibody (STJ11105366) at a dilution of 1:100 (40x lens). High pressure antigen retrieval was performed with 0.01 M citrate buffer (pH 6.0) prior to immunohistochemistry staining.



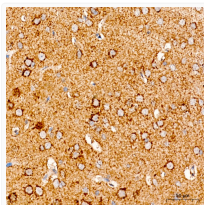
Immunohistochemistry analysis of COX5A in paraffin-embedded human liver cancer tissue using [KO Validated] COX5A Rabbit polyclonal antibody (STJ11105366) at a dilution of 1:100 (40x lens). High pressure antigen retrieval was performed with 0.01 M citrate buffer (pH 6.0) prior to immunohistochemistry staining.



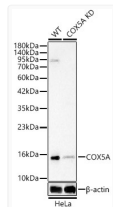
Immunohistochemistry analysis of COX5A in paraffin-embedded mouse kidney tissue using [KO Validated] COX5A Rabbit polyclonal antibody (STJ11105366) at a dilution of 1:100 (40x lens). High pressure antigen retrieval was performed with 0.01 M citrate buffer (pH 6.0) prior to immunohistochemistry staining.



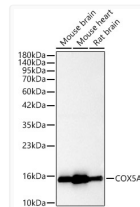
Immunohistochemistry analysis of COX5A in paraffin-embedded human colon carcinoma tissue using [KO Validated] COX5A Rabbit polyclonal antibody (STJ11105366) at a dilution of 1:100 (40x lens). High pressure antigen retrieval was performed with 0.01 M citrate buffer (pH 6.0) prior to immunohistochemistry staining.



Immunohistochemistry analysis of COX5A in paraffin-embedded rat brain tissue using [KO Validated] COX5A Rabbit polyclonal antibody (STJ11105366) at a dilution of 1:100 (40x lens). High pressure antigen retrieval was performed with 0.01 M citrate buffer (pH 6.0) prior to immunohistochemistry staining.



Western blot analysis of lysates from wild type (WT) and COX5A knockdown (KD) HeLa cells, using [KO Validated] COX5A Rabbit polyclonal antibody (STJ11105366) at 1:2000 dilution. Secondary antibody: HRP Goat Anti-Rabbit IgG (H+L) (STJS000856) at 1:10000 dilution. Lysates/proteins: 25ug per lane. Blocking buffer: 3% nonfat dry milk in TBST. Detection: ECL Basic Kit. Exposure time: 60s.



Western blot analysis of various lysates, using [KO Validated] COX5A Rabbit polyclonal antibody (STJ11105366) at 1:2000 dilution. Secondary antibody: HRP Goat Anti-Rabbit IgG (H+L) (STJS000856) at 1:10000 dilution. Lysates/proteins: 25ug per lane. Blocking buffer: 3% nonfat dry milk in TBST. Detection: ECL Basic Kit. Exposure time: 60s.