

## Anti-TGM3 antibody (291-480) (STJ11105361)

### GENERAL INFORMATION

Product Type	Primary antibodies
Applications	WB/IF/ICC/ELISA
Host / Source	Rabbit
Reactivity	Human/Mouse

### PRODUCT PROPERTIES

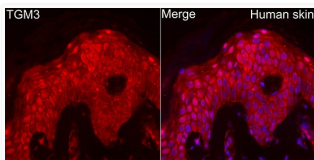
Clonality	Polyclonal
Concentration	Lot specific
Conjugation	Unconjugated
Purification	Affinity purification
Dilution Range	WB:1:1000-1:5000 IF/CC:1:50-1:200 ELISA:Recommended starting concentration is 1 $\mu$ g/mL. Please optimize the concentration based on your specific assay requirements.
Formulation	PBS with 0.05% Proclin300, 50% Glycerol, pH 7.3.
Isotype	IgG
Molecular Weight	Protein Mw: 76kDa Observed Mw: 70kDa
Storage Instruction	Store at -20°C for up to 1 year from the date of receipt, and avoid repeat freeze-thaw cycles.

### TARGET INFORMATION

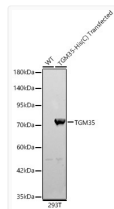
Gene ID	<a href="#">7053</a>
Gene Symbol	<a href="#">TGM3</a>
UniProt ID	<a href="#">TGM3_HUMAN</a>
Immunogen Region	291-480
Immunogen Sequence	SRVITNFNSAHDTDRNLSVD VYYDPMGNPLDKGSDSVWNF HVWNEGWFVRSDDLGPSYGGW QVLDPATPQERSQGVFQCGPA SVIGVREGDVQLNFDMPFIF AEVNADRIWLYDNTTGGKQW KNSVNSHTIGRYISTKAVGS NARMDVTDKYKYPEGSDQER QVFQKALGKLPNTPFAATS SMGLETEEQE
Specificity	Recombinant fusion protein containing a sequence corresponding to amino acids 291-480 of human TGM3 (NP_003236.3).

### ADDITIONAL INFORMATION

Note **STRICTLY FOR FURTHER SCIENTIFIC RESEARCH USE ONLY (RUO). MUST NOT TO BE USED IN DIAGNOSTIC OR THERAPEUTIC APPLICATIONS.**



Immunofluorescence analysis of human skin cells using TGM3 Rabbit polyclonal antibody (STJ11105361) at dilution of 1:200 (40x lens). Perform high pressure antigen retrieval with 10 mM citrate buffer pH 6.0 before commencing with IF staining protocol. Secondary antibody: Cy3 Goat Anti-Rabbit IgG (H+L) at 1:500 dilution. Blue: DAPI for nuclear staining.



Western blot analysis of lysates from wild type (WT) and 293T cells transfected with TGM3 using TGM3 Rabbit polyclonal antibody (STJ11105361) at 1:2000 dilution. Secondary antibody:HRP Goat Anti-Rabbit IgG (H+L) (STJS000856) at 1:10000 dilution. Lysates/ proteins: 25  $\mu$ g per lane. Blocking buffer: 3 % nonfat dry milk in TBST. Detection:ECL Basic Kit. Exposure time: 10s.