

Anti-CD101 antibody (21-410) (STJ11105359)

GENERAL INFORMATION

Product Type	Primary antibodies
Applications	WB/ELISA
Host / Source	Rabbit
Reactivity	Human

PRODUCT PROPERTIES

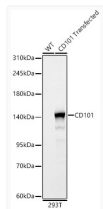
Clonality	Polyclonal
Concentration	Lot specific
Conjugation	Unconjugated
Purification	Affinity purification
Dilution Range	WB:1:500-1:1000 ELISA:Recommended starting concentration is 1 µg/mL. Please optimize the concentration based on your specific assay requirements.
Formulation	PBS with 0.05% Proclin300, 50% Glycerol, pH 7.3.
Isotype	IgG
Molecular Weight	Protein Mw: 115kDa Observed Mw: 140kDa
Storage Instruction	Store at -20°C for up to 1 year from the date of receipt, and avoid repeat freeze-thaw cycles.

TARGET INFORMATION

Gene ID	9398
Gene Symbol	CD101
UniProt ID	IGSF2_HUMAN
Immunogen Region	21-410
Immunogen Sequence	QREVTVQKGPLFRAEGYPVS IGCNVTGHQGPSEQHFQWSV YLPTNPTQEVQIISTKDAAF SYAVYTQVRVRSQDVYVERVQ GNSVLLHISKLMKMDAGEYE CHTPNTDEKYYGSYSAKTNL IVPDTLSATMSSQTLGKEE GEPLALTCEASKATAQHTL SVTWYLTQDGGGSQATEIIS LSKDFILVPGPLYTERFAAS DVQLNKLGPPTFFRLSIERLQ SSDQQLFCEATEWIQDDPD
Specificity	Recombinant fusion protein containing a sequence corresponding to amino acids 21-410 of human CD101 (NP_004249.2).

ADDITIONAL INFORMATION

Note STRICTLY FOR FURTHER SCIENTIFIC RESEARCH USE ONLY (RUO). MUST NOT TO BE USED IN DIAGNOSTIC OR THERAPEUTIC APPLICATIONS.



Western blot analysis of lysates from wild type (WT) and 293T cells transfected with CD101, using CD101 Rabbit polyclonal antibody (STJ11105359) at 1:1000 dilution. Secondary antibody: HRP Goat Anti-Rabbit IgG (H+L) (STJS000856) at 1:10000 dilution. Lysates/proteins: 25µg per lane. Blocking buffer: 3% nonfat dry milk in TBST. Detection: ECL Basic Kit. Exposure time: 5s.