

Anti-PRKACA antibody (251-351) (STJ11105351)

GENERAL INFORMATION

Product Type	Primary antibodies
Applications	WB/ELISA
Host / Source	Rabbit
Reactivity	Human/Mouse/Rat

PRODUCT PROPERTIES

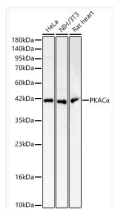
Clonality	Polyclonal
Concentration	Lot specific
Conjugation	Unconjugated
Purification	Affinity purification
Dilution Range	WB:1:500-1:1000 ELISA:Recommended starting concentration is 1 µg/mL. Please optimize the concentration based on your specific assay requirements.
Formulation	PBS with 0.05% Proclin300, 50% Glycerol, pH 7.3.
Isotype	IgG
Molecular Weight	Protein Mw: 39kDa/40kDa Observed Mw: 41kDa
Storage Instruction	Store at -20°C for up to 1 year from the date of receipt, and avoid repeat freeze-thaw cycles.

TARGET INFORMATION

Gene ID	5566
Gene Symbol	PRKACA
UniProt ID	KAPCA_HUMAN
Immunogen Region	251-351
Immunogen Sequence	IVSGKVRFPSPHFSSDLKDLL RNLLQVDLTKRFGNLKNQVNDIKNHKWFATTDWIAIYQRK VEAPFIPKFKGPGDTSNFDD YEEEEIRVSINEKCGKEFSE F
Specificity	A synthetic peptide corresponding to a sequence within amino acids 251-351 of human PKAC Alpha (NP_002721.1).

ADDITIONAL INFORMATION

Note **STRICTLY FOR FURTHER SCIENTIFIC RESEARCH USE ONLY (RUO). MUST NOT TO BE USED IN DIAGNOSTIC OR THERAPEUTIC APPLICATIONS.**



Western blot analysis of various lysates, using PKAC Alpha Rabbit polyclonal antibody (STJ11105351) at 1:500 dilution. Secondary antibody: HRP Goat Anti-Rabbit IgG (H+L) (STJS000856) at 1:10000 dilution. Lysates/proteins: 25µg per lane. Blocking buffer: 3% nonfat dry milk in TBST. Detection: ECL Basic Kit. Exposure time: 10s.