

Anti-P2RY11 antibody (1-100) (STJ11105350)

GENERAL INFORMATION

Product Type	Primary antibodies
Applications	IF/ICC/ELISA
Host / Source	Rabbit
Reactivity	Human/Mouse

PRODUCT PROPERTIES

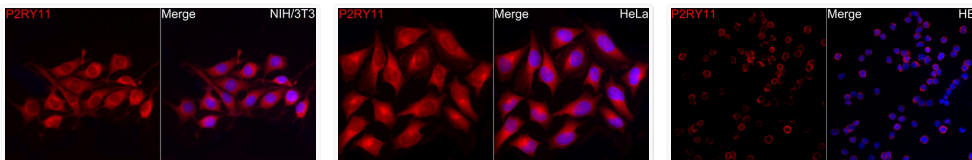
Clonality	Polyclonal
Concentration	Lot specific
Conjugation	Unconjugated
Purification	Affinity purification
Dilution Range	IF/ICC:1:50-1:200 ELISA:Recommended starting concentration is 1 µg/mL. Please optimize the concentration based on your specific assay requirements.
Formulation	PBS with 0.05% Proclin300, 50% Glycerol, pH 7.3.
Isotype	IgG
Molecular Weight	Protein Mw: 40kDa Observed Mw: Refer to figures
Storage Instruction	Store at -20°C for up to 1 year from the date of receipt, and avoid repeat freeze-thaw cycles.

TARGET INFORMATION

Gene ID	5032
Gene Symbol	P2RY11
UniProt ID	P2Y11_HUMAN
Immunogen Region	1-100
Immunogen Sequence	MAANVSGAKSCPANFLAAAD DKLSGFQGDFLWPILVVEFL VAVASNGLALYRFSIRKQRP WHPAVVFSVQLAVSDLLCAL TLPPLAAYLYPPKHWRYGEA
Specificity	A synthetic peptide corresponding to a sequence within amino acids 1-100 of human P2RY11 (NP_002557.2).

ADDITIONAL INFORMATION

Note STRICTLY FOR FURTHER SCIENTIFIC RESEARCH USE ONLY (RUO). MUST NOT TO BE USED IN DIAGNOSTIC OR THERAPEUTIC APPLICATIONS.



Immunofluorescence analysis of NIH/3T3 cells using P2RY11 Rabbit polyclonal antibody (STJ11105350) at dilution of 1:100 (40x lens). Blue: DAPI for nuclear staining.

Immunofluorescence analysis of HeLa cells using P2RY11 Rabbit polyclonal antibody (STJ11105350) at dilution of 1:100 (40x lens). Blue: DAPI for nuclear staining.

Immunofluorescence analysis of HEL cells using P2RY11 Rabbit polyclonal antibody (STJ11105350) at dilution of 1:100 (40x lens). Blue: DAPI for nuclear staining.