

Anti-CBLIF antibody (19-417) (STJ11105347)

GENERAL INFORMATION

| | |
|---------------|--------------------|
| Product Type | Primary antibodies |
| Applications | WB/ELISA |
| Host / Source | Rabbit |
| Reactivity | Human/Mouse/Rat |

PRODUCT PROPERTIES

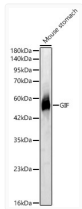
| | |
|---------------------|--|
| Clonality | Polyclonal |
| Concentration | Lot specific |
| Conjugation | Unconjugated |
| Purification | Affinity purification |
| Dilution Range | WB:1:500-1:1000 ELISA:Recommended starting concentration is 1 µg/mL. Please optimize the concentration based on your specific assay requirements. |
| Formulation | PBS with 0.05% Proclin300, 50% Glycerol, pH 7.3. |
| Isotype | IgG |
| Molecular Weight | Protein Mw: 42kDa/45kDa Observed Mw: 55kDa |
| Storage Instruction | Store at -20°C for up to 1 year from the date of receipt, and avoid repeat freeze-thaw cycles. |

TARGET INFORMATION

| | |
|--------------------|---|
| Gene ID | 2694 |
| Gene Symbol | CBLIF |
| UniProt ID | IF_HUMAN |
| Immunogen Region | 19-417 |
| Immunogen Sequence | STQTQSSCSVPSAQEPLVNG IQVLMENSVTSSAYPNPSIL IAMNLGAYNLKAQKLLTYQ LMSSDNNDLTIGQLGTIMA LTSSCRDPGDKVSIHQROME NWAPSSPNAEASAFYGPSLA ILALCQKNSEATLPIAVRFA KTLANSPPFNVDTGAMATL ALTCMYNKIPVGSEEGYRSL FGQVLKDIVKISMKIKDNG IIGDIYSTGLAMQALSVTPE PSKKEWNCKKTTDMILNEI |
| Specificity | Recombinant fusion protein containing a sequence corresponding to amino acids 19-417 of human GIF (NP_005133.2). |

ADDITIONAL INFORMATION

| | |
|------|---|
| Note | STRICTLY FOR FURTHER SCIENTIFIC RESEARCH USE ONLY (RUO). MUST NOT TO BE USED IN DIAGNOSTIC OR THERAPEUTIC APPLICATIONS. |
|------|---|



Western blot analysis of Mouse stomach, using GIF Rabbit polyclonal antibody (STJ11105347) at 1:1000 dilution. Secondary antibody: HRP Goat Anti-Rabbit IgG (H+L) (STJS000856) at 1:10000 dilution. Lysates/proteins: 25µg per lane. Blocking buffer: 3% nonfat dry milk in TBST. Detection: ECL Basic Kit. Exposure time: 3s.