

Anti-AKT1/AKT2/AKT3 antibody (1-123) (STJ11105345)

GENERAL INFORMATION

Product Type	Primary antibodies
Applications	WB/ELISA
Host / Source	Rabbit
Reactivity	Human/Mouse/Rat

PRODUCT PROPERTIES

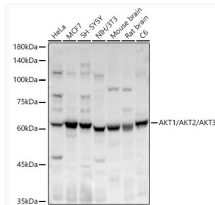
Clonality	Polyclonal
Concentration	Lot specific
Conjugation	Unconjugated
Purification	Affinity purification
Dilution Range	WB:1:500-1:1000 ELISA:Recommended starting concentration is 1 Mu g/mL. Please optimize the concentration based on your specific assay requirements.
Formulation	PBS with 0.05% Proclin300, 50% Glycerol, pH 7.3.
Isotype	IgG
Molecular Weight	Protein Mw: 56kDa Observed Mw: 60kDa
Storage Instruction	Store at -20°C for up to 1 year from the date of receipt, and avoid repeat freeze-thaw cycles.

TARGET INFORMATION

Gene ID	207 208 10000 AKT1 AKT2 AKT1_HUMAN AKT2_HUMAN AKT3_HUMAN
Immunogen Region	1-123
Immunogen Sequence	MSDVAIVKEGWLHKRGEYIK TWRPRYFLLKNDGTFIGYKE RPQDVDQREAPLNNFSVAQC QLMKTERPRPNTFIIRCLQW TTVIERTFHVETPEEREWEWT TAIQTVADGLKKQEEEEEMDF RSG
Specificity	Recombinant fusion protein containing a sequence corresponding to amino acids 1-123 of human AKT1/AKT2/AKT3 (NP_005154.2).

ADDITIONAL INFORMATION

Note STRICTLY FOR FURTHER SCIENTIFIC RESEARCH USE ONLY (RUO). MUST NOT TO BE USED IN DIAGNOSTIC OR THERAPEUTIC APPLICATIONS.



Western blot analysis of various lysates, using AKT1/AKT2/AKT3 Rabbit polyclonal antibody (STJ11105345) at 1:700 dilution. Secondary antibody: HRP Goat Anti-Rabbit IgG (H+L) (STJS000856) at 1:10000 dilution. Lysates/proteins: 25ug per lane. Blocking buffer: 3% nonfat dry milk in TBST. Detection: ECL Basic Kit. Exposure time: 3s.