

Anti-perilipin-2 antibody (325-425) (STJ11105333)

GENERAL INFORMATION

Product Type	Primary antibodies
Applications	IHC-P/IF/ICC/ELISA
Host / Source	Rabbit
Reactivity	Rat

PRODUCT PROPERTIES

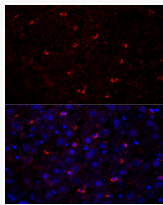
Clonality	Polyclonal
Concentration	Lot specific
Conjugation	Unconjugated
Purification	Affinity purification
Dilution Range	IHC-P:1:50-1:200 IF/CC:1:50-1:200 ELISA:Recommended starting concentration is 1 μ g/mL. Please optimize the concentration based on your specific assay requirements.
Formulation	PBS with 0.09% Sodium Azide, 50% Glycerol, pH7.3.
Isotype	IgG
Molecular Weight	Protein Mw: 46kDa Observed Mw: Refer to figures
Storage Instruction	Store at -20°C for up to 1 year from the date of receipt, and avoid repeat freeze-thaw cycles.

TARGET INFORMATION

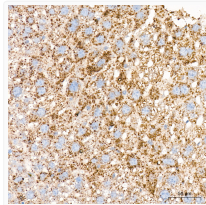
Gene ID	11520
Gene Symbol	Plin2
UniProt ID	PLIN2_MOUSE
Immunogen Region	325-425
Immunogen Sequence	TVLVNAQGLPQNIQDQAKHL GVMAGDIYSVFRNAASFKEV SDGVLTSKGLQKMKESLD EVMDYFVNNTPLNWLVGPFY PQSTEVNKASLKVQSEVKA Q
Specificity	A synthetic peptide corresponding to a sequence within amino acids 325-425 of mouse perilipin-2 (NP_031434.3).

ADDITIONAL INFORMATION

Note **STRICTLY FOR FURTHER SCIENTIFIC RESEARCH USE ONLY (RUO). MUST NOT TO BE USED IN DIAGNOSTIC OR THERAPEUTIC APPLICATIONS.**



Perform high pressure antigen retrieval with 10 mM citrate buffer pH 6.0 before commencing with IF staining protocol. Immunofluorescence analysis of paraffin-embedded rat liver using perilipin-2 Rabbit polyclonal antibody (STJ11105333) at dilution of 1:200 (40x lens). Secondary antibody: Cy3 Goat Anti-Rabbit IgG (H+L) at 1:500 dilution. Blue: DAPI for nuclear staining.



Immunohistochemistry analysis of perilipin-2 in paraffin-embedded rat liver tissue using perilipin-2 Rabbit polyclonal antibody (STJ11105333) at a dilution of 1:100 (40x lens). High pressure antigen retrieval was performed with 0.01 M citrate buffer (pH 6.0) prior to immunohistochemistry staining.