

Anti-MMP1 antibody (369-469) (STJ11105322)

GENERAL INFORMATION

Product Type	Primary antibodies
Applications	IF/ICC
Host / Source	Rabbit
Reactivity	Mouse/Rat

PRODUCT PROPERTIES

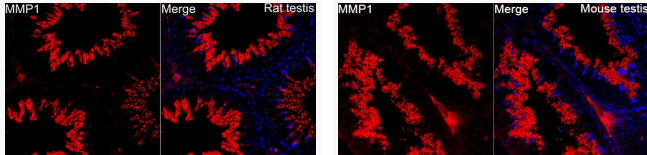
Clonality	Polyclonal
Concentration	Lot specific
Conjugation	Unconjugated
Purification	Affinity purification
Dilution Range	IF/ICC:1:50-1:200
Formulation	PBS with 0.05% Proclin300, 50% Glycerol, pH 7.3.
Isotype	IgG
Molecular Weight	Protein Mw: 54kDa Observed Mw: Refer to figures
Storage Instruction	Store at -20°C for up to 1 year from the date of receipt, and avoid repeat freeze-thaw cycles.

TARGET INFORMATION

Gene ID	4312
Gene Symbol	MMP1
UniProt ID	MMP1_HUMAN
Immunogen Region	369-469
Immunogen Sequence	FPRTVKHIDAALSEENTGKT YFFVANKYWRDYDEYKRSMDP GYPKMAIHDFFGIGHKVDVA FMKDGFFYFFHGTQRQYKFDK KTKRILTLQKANSWFNCRKN
Specificity	A synthetic peptide corresponding to a sequence within amino acids 369-469 of human MMP1 (NP_002412.1).

ADDITIONAL INFORMATION

Note **STRICTLY FOR FURTHER SCIENTIFIC RESEARCH USE ONLY (RUO). MUST NOT TO BE USED IN DIAGNOSTIC OR THERAPEUTIC APPLICATIONS.**



Immunofluorescence analysis of paraffin-embedded rat testis using MMP-1 Rabbit polyclonal antibody (STJ11105322) at dilution of 1:100 (40x lens). Secondary antibody: Cy3 Goat Anti-Rabbit IgG (H+L) at 1:500 dilution. Blue: DAPI for nuclear staining. Perform high pressure antigen retrieval with 10 mM citrate buffer pH 6.0 before commencing with IF staining protocol.

Immunofluorescence analysis of paraffin-embedded mouse testis using MMP-1 Rabbit polyclonal antibody (STJ11105322) at dilution of 1:100 (40x lens). Secondary antibody: Cy3 Goat Anti-Rabbit IgG (H+L) at 1:500 dilution. Blue: DAPI for nuclear staining. Perform high pressure antigen retrieval with 0.01M citrate buffer (pH 6.0) prior to IF staining.