

Anti-EP300 antibody (940-1030) (STJ11105314)

GENERAL INFORMATION

Product Type	Primary antibodies
Applications	IHC-P/ELISA
Host / Source	Rabbit
Reactivity	Mouse/Rat

PRODUCT PROPERTIES

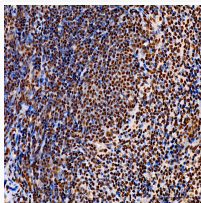
Clonality	Polyclonal
Concentration	Lot specific
Conjugation	Unconjugated
Purification	Affinity purification
Dilution Range	IHC-P:1:50-1:200 ELISA:Recommended starting concentration is 1 µg/mL. Please optimize the concentration based on your specific assay requirements.
Formulation	PBS with 0.05% Proclin300, 50% Glycerol, pH 7.3.
Isotype	IgG
Molecular Weight	Protein Mw: 264kDa Observed Mw: Refer to figures
Storage Instruction	Store at -20°C for up to 1 year from the date of receipt, and avoid repeat freeze-thaw cycles.

TARGET INFORMATION

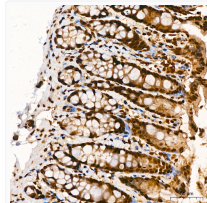
Gene ID	2033
Gene Symbol	EP300
UniProt ID	EP300_HUMAN
Immunogen Region	940-1030
Immunogen Sequence	LSQPAVSIIEGQVSNPPSTSS TEVNSQAIAEKQPSQEVKME AKMEVDQPEPADTQPEDISE SKVEDCKMESTETEERSTEL KTEIKEEEDQP
Specificity	Recombinant Protein corresponding to a sequence within amino acids 940-1030 of human EP300 (NP_001420.2).

ADDITIONAL INFORMATION

Note STRICTLY FOR FURTHER SCIENTIFIC RESEARCH USE ONLY (RUO). MUST NOT TO BE USED IN DIAGNOSTIC OR THERAPEUTIC APPLICATIONS.



Immunohistochemistry analysis of EP300 in paraffin-embedded mouse spleen tissue using EP300 Rabbit polyclonal antibody (STJ11105314) at a dilution of 1:100 (40x lens). High pressure antigen retrieval was performed with 0.01 M citrate buffer (pH 6.0) prior to immunohistochemistry staining.



Immunohistochemistry analysis of EP300 in paraffin-embedded rat colon tissue using EP300 Rabbit polyclonal antibody (STJ11105314) at a dilution of 1:100 (40x lens). High pressure antigen retrieval was performed with 0.01 M citrate buffer (pH 6.0) prior to immunohistochemistry staining.