

Anti-Cleaved-GSDMB antibody (C-Term) [S5311RM] (STJ11105311)

GENERAL INFORMATION

Product Type	Primary antibodies
Applications	WB/ELISA
Host / Source	Rabbit
Reactivity	Human

PRODUCT PROPERTIES

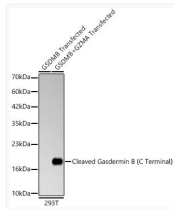
Clonality	Monoclonal
Concentration	Lot specific
Conjugation	Unconjugated
Purification	Affinity purification
Dilution Range	WB:1:500-1:1000 ELISA:Recommended starting concentration is 1 µg/mL. Please optimize the concentration based on your specific assay requirements.
Formulation	PBS with 0.05% Proclin300, 0.05% BSA, 50% Glycerol, pH 7.3.
Isotype	IgG
Molecular Weight	Protein Mw: 18kDa/45kDa/46kDa/47kDa Observed Mw: 16kDa
Storage Instruction	Store at -20°C for up to 1 year from the date of receipt, and avoid repeat freeze-thaw cycles.

TARGET INFORMATION

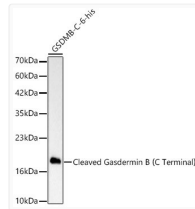
Gene ID	55876
Gene Symbol	GSDMB
UniProt ID	GSDMB_HUMAN
Immunogen Region	C-Term
Immunogen Sequence	GKSLG
Specificity	A synthetic peptide corresponding to residues surrounding Ser245 of human Gasdermin B (NP_001159430.1).

ADDITIONAL INFORMATION

Note **STRICTLY FOR FURTHER SCIENTIFIC RESEARCH USE ONLY (RUO). MUST NOT TO BE USED IN DIAGNOSTIC OR THERAPEUTIC APPLICATIONS.**



Western blot analysis of lysates from 293T GSDMB stable cells and 293T GSDMB stable cells transfected with GZMA using Cleaved Gasdermin B (C Terminal) Rabbit monoclonal antibody (STJ11105311) at 1:1000 dilution. Secondary antibody: HRP Goat Anti-Rabbit IgG (H+L) (STJS000856) at 1:10000 dilution. Lysates/proteins: 25 µg per lane. Blocking buffer: 3% nonfat dry milk in TBST. Detection: ECL Basic Kit. Exposure time: 90s. western blot samples for antibody validation are kindly provided by Dr. Feng Shao, NIBS



Western blot analysis of lysates from GSDMB-C-6his protein, using Cleaved Gasdermin B (C Terminal) Rabbit monoclonal antibody (STJ11105311) at 1:1000 dilution. Secondary antibody: HRP Goat Anti-Rabbit IgG (H+L) (STJS000856) at 1:10000 dilution. Lysates/proteins: 25µg per lane. Blocking buffer: 3% nonfat dry milk in TBST. Detection: ECL Basic Kit. Exposure time: 0. 3s. western blot samples for antibody validation are kindly provided by Dr. Feng Shao, NIBS