

Anti-NLRP3 antibody (1-150) [S5304RM] (STJ11105304)

GENERAL INFORMATION

Product Type	Primary antibodies
Applications	WB/IF/ICC/IP/ELISA
Host / Source	Rabbit
Reactivity	Mouse

PRODUCT PROPERTIES

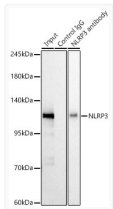
Clonality	Monoclonal
Concentration	Lot specific
Conjugation	Unconjugated
Purification	Affinity purification
Dilution Range	WB:1:1000-1:6000 IF/CC:1:100-1:500 IP:0.5 Mu g-4 Mu g antibody for 200 Mu g-400 Mu g extracts of whole cells ELISA:Recommended starting concentration is 1 Mu g/mL. Please optimize the concentration based on your specific assay requiremen
Formulation	PBS with 0.05% Proclin300, 0.05% BSA, 50% Glycerol, pH 7.3.
Isotype	IgG
Molecular Weight	Protein Mw: 118kDa Observed Mw: 110kDa//110KD
Storage Instruction	Store at -20°C for up to 1 year from the date of receipt, and avoid repeat freeze-thaw cycles.

TARGET INFORMATION

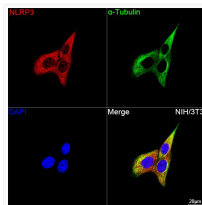
Gene ID	216799
Gene Symbol	Nlrp3
UniProt ID	NLRP3_MOUSE
Immunogen Region	1-150
Immunogen Sequence	MTSVRCKLAQYLEDLEDVDL KFKMHLEDYPPEKGCIPVP RGQMEKADHLDLATLMIDFN GEEKAWAMAVWIFAAINRRD LWEKAKKDQPEWNDTCTSHS SMVCQEDSLEEEWMLGLGYL SRISICKKKDYCKMYRRHV RSRFYSIKDR
Specificity	Recombinant fusion protein containing a sequence corresponding to amino acids 1-150 of mouse NLRP3 (NP_665826.1).

ADDITIONAL INFORMATION

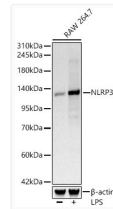
Note STRICTLY FOR FURTHER SCIENTIFIC RESEARCH USE ONLY (RUO). MUST NOT TO BE USED IN DIAGNOSTIC OR THERAPEUTIC APPLICATIONS.



Immunoprecipitation of NLRP3 in 200 µg extracts from RAW 264. 7 cells using 0.5 µg NLRP3 Rabbit monoclonal antibody (STJ11105304). Western blot analysis was performed using NLRP3 Rabbit monoclonal antibody (STJ11105304) at 1:2000 dilution.



Confocal imaging of NIH/3T3 cells using NLRP3 Rabbit monoclonal antibody (STJ11105304, dilution 1:200) followed by a further incubation with Cy3 Goat Anti-Rabbit IgG (H+L) (dilution 1:500) (Red). The cells were counterstained with Alpha-Tubulin Mouse monoclonal antibody (dilution 1:400) followed by incubation with ABflo® 488-conjugated Goat Anti-Mouse IgG (H+L) antibody (dilution 1:500) (Green). DAPI was used for nuclear staining (Blue). Objective: 100x.



Western blot analysis of lysates from RAW 264. 7 cells, using NLRP3 Rabbit monoclonal antibody (STJ11105304) at 1:1000 dilution. Raw264. 7 cells were treated by LPS (1 Mu g/ml) at 37 °C for 8 hours. Secondary antibody: HRP Goat Anti-Rabbit IgG (H+L) (STJS000856) at 1:10000 dilution. Lysates/proteins: 25µg per lane. Blocking buffer: 3% nonfat dry milk in TBST. Detection: ECL Basic Kit. Exposure time: 10s.