

## Anti-Cy5 antibody [S5303RM] (STJ11105303)

### GENERAL INFORMATION

Product Type	Primary antibodies
Applications	DB/ELISA
Host / Source	Rabbit
Reactivity	Species Independent

### PRODUCT PROPERTIES

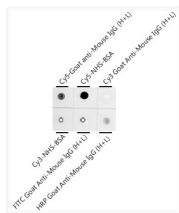
Clonality	Monoclonal
Concentration	Lot specific
Conjugation	Unconjugated
Purification	Affinity purification
Dilution Range	DB:1:1000-1:2000 ELISA: Recommended starting concentration is 1 µg/mL. Please optimize the concentration based on your specific assay requirements.
Formulation	PBS with 0.05% Proclin300, 0.05% BSA, 50% Glycerol, pH 7.3.
Isotype	IgG
Storage Instruction	Store at -20°C for up to 1 year from the date of receipt, and avoid repeat freeze-thaw cycles.

### TARGET INFORMATION

Specificity	Chemical compounds corresponding to Cy5.
-------------	--

### ADDITIONAL INFORMATION

Note	STRICTLY FOR FURTHER SCIENTIFIC RESEARCH USE ONLY (RUO). MUST NOT TO BE USED IN DIAGNOSTIC OR THERAPEUTIC APPLICATIONS.
------	---



Dot-blot analysis of all sorts of compounds using Cy5 Rabbit monoclonal antibody (STJ11105303) at 1:1000 dilution.