

Anti-YTHDF2 antibody (153-253) (STJ11105301)

GENERAL INFORMATION

Product Type	Primary antibodies
Applications	WB/IHC-P/IF/ICC/ELISA
Host / Source	Rabbit
Reactivity	Human/Mouse/Rat

PRODUCT PROPERTIES

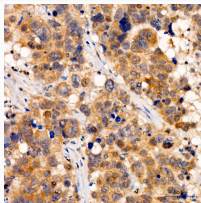
Clonality	Polyclonal
Concentration	Lot specific
Conjugation	Unconjugated
Purification	Affinity purification
Dilution Range	WB:1:500-1:1000 IHC-P:1:50-1:200 IF/CC:1:50-1:200 ELISA:Recommended starting concentration is 1 µg/mL. Please optimize the concentration based on your specific assay requirements.
Formulation	PBS with 0.09% Sodium Azide, 50% Glycerol, pH7.3.
Isotype	IgG
Molecular Weight	Protein Mw: 62kDa Observed Mw: 65kDa
Storage Instruction	Store at -20°C for up to 1 year from the date of receipt, and avoid repeat freeze-thaw cycles.

TARGET INFORMATION

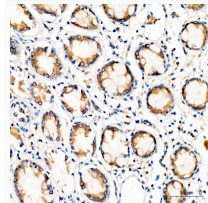
Gene ID	51441
Gene Symbol	YTHDF2
UniProt ID	YTHD2_HUMAN
Immunogen Region	153-253
Immunogen Sequence	STQSSGYSSNYAYAPSSLGG AMIDGQSAFANETLNKAPGM NTIDQGMALKLGSTEVASN VPKVVGSAVGSITSNIVA SNSLPPATIAPPKPASWADI A
Specificity	A synthetic peptide corresponding to a sequence within amino acids 143-243AA of human YTHDF2 (NP_001166599.1).

ADDITIONAL INFORMATION

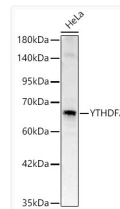
Note **STRICTLY FOR FURTHER SCIENTIFIC RESEARCH USE ONLY (RUO). MUST NOT TO BE USED IN DIAGNOSTIC OR THERAPEUTIC APPLICATIONS.**



Immunohistochemistry analysis of YTHDF2 in paraffin-embedded human lung cancer using YTHDF2 Rabbit polyclonal antibody (STJ11105301) at dilution of 1:50 (40x lens). Perform high pressure antigen retrieval with 10 mM citrate buffer pH 6.0 before commencing with immunohistochemistry staining protocol.



Immunohistochemistry analysis of YTHDF2 in paraffin-embedded human colon using YTHDF2 Rabbit polyclonal antibody (STJ11105301) at dilution of 1:50 (40x lens). Perform high pressure antigen retrieval with 10 mM citrate buffer pH 6.0 before commencing with immunohistochemistry staining protocol.



Western blot analysis of lysates from HeLa cells, using YTHDF2 Rabbit polyclonal antibody (STJ11105301) at 1:1000 dilution. Secondary antibody: HRP Goat Anti-Rabbit IgG (H+L) (STJS000856) at 1:10000 dilution. Lysates/proteins: 25µg per lane. Blocking buffer: 3% nonfat dry milk in TBST. Detection: ECL Basic Kit. Exposure time: 60s.