

Anti-PPP2R2A antibody (94-194) [S5300RM] (STJ11105300)

GENERAL INFORMATION

Product Type	Primary antibodies
Applications	WB/ELISA
Host / Source	Rabbit
Reactivity	Human/Mouse/Rat

PRODUCT PROPERTIES

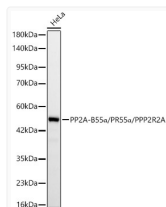
Clonality	Monoclonal
Concentration	Lot specific
Conjugation	Unconjugated
Purification	Affinity purification
Dilution Range	WB:1:2000-1:8000 ELISA:Recommended starting concentration is 1 µg/mL. Please optimize the concentration based on your specific assay requirements.
Formulation	PBS with 0.05% Proclin300, 0.05% BSA, 50% Glycerol, pH 7.3.
Isotype	IgG
Molecular Weight	Protein Mw: 52kDa Observed Mw: 52kDa
Storage Instruction	Store at -20°C for up to 1 year from the date of receipt, and avoid repeat freeze-thaw cycles.

TARGET INFORMATION

Gene ID	5520
Gene Symbol	PPP2R2A
UniProt ID	2ABA_HUMAN
Immunogen Region	94-194
Immunogen Sequence	EKINKIRWLPQKNAAQFLLS TNDKTIKLWKISERDKRPEG YNLKEEDGRYRDPTTVTTLR VPVFRPMDLMVEASPRRIFA NAHTYHINSISINSYETYL S
Specificity	A synthetic peptide corresponding to a sequence within amino acids 94-194 of human PP2A-B55 Alpha/PR55 Alpha/PPP2R2A (NP_002708.1).

ADDITIONAL INFORMATION

Note **STRICTLY FOR FURTHER SCIENTIFIC RESEARCH USE ONLY (RUO). MUST NOT TO BE USED IN DIAGNOSTIC OR THERAPEUTIC APPLICATIONS.**



Western blot analysis of lysates from HeLa cells, using PP2A-B55 Alpha/PR55 Alpha/PPP2R2A Rabbit monoclonal antibody (STJ11105300) at 1:2000 dilution. Secondary antibody: HRP Goat Anti-Rabbit IgG (H+L) (STJS000856) at 1:10000 dilution. Lysates/proteins: 25µg per lane. Blocking buffer: 3% nonfat dry milk in TBST. Detection: ECL Basic Kit. Exposure time: 30s.