

Anti-YTHDC2 antibody (1286-1430) (STJ11105298)

GENERAL INFORMATION

Product Type	Primary antibodies
Applications	WB/IF/ICC/IP/ELISA
Host / Source	Rabbit
Reactivity	Human/Mouse/Rat

PRODUCT PROPERTIES

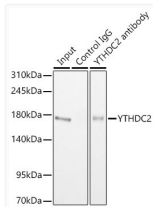
Clonality	Polyclonal
Concentration	Lot specific
Conjugation	Unconjugated
Purification	Affinity purification
Dilution Range	WB:1:500-1:1000 IF/CC:1:50-1:200 IP:0.5 Mu g-4 Mu g antibody for 200 Mu g-400 Mu g extracts of whole cells ELISA:Recommended starting concentration is 1 Mu g/mL. Please optimize the concentration based on your specific assay requirements
Formulation	PBS with 0.05% Proclin300, 50% Glycerol, pH 7.3.
Isotype	IgG
Molecular Weight	Protein Mw: 160kDa Observed Mw: 170kDa
Storage Instruction	Store at -20°C for up to 1 year from the date of receipt, and avoid repeat freeze-thaw cycles.

TARGET INFORMATION

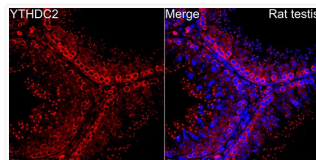
Gene ID	64848
Gene Symbol	YTHDC2
UniProt ID	YTDC2_HUMAN
Immunogen Region	1286-1430
Immunogen Sequence	MPVRYFIMKSSNLRNLEISQ QKGIWSTTPSNERKLNRAFW ESSIVYLVFSVQGSQGHFQGF SRMSSEIGREKSQDWGSAGL GGVFKVEWIRKESLPFQFAH HLLNPWNDNKKVQISRQDQGE LEPLVGELLQLWERLPLGE KNTTD
Specificity	Recombinant Protein corresponding to a sequence within amino acids 1286-1430 of human YTHDC2 (NP_073739.3).

ADDITIONAL INFORMATION

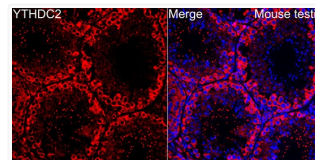
Note STRICTLY FOR FURTHER SCIENTIFIC RESEARCH USE ONLY (RUO). MUST NOT TO BE USED IN DIAGNOSTIC OR THERAPEUTIC APPLICATIONS.



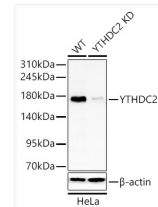
Immunoprecipitation of YTHDC2 in 200 µg extracts from 293T cells using 0.5 µg [KD Validated] YTHDC2 Rabbit polyclonal antibody (STJ11105298). Western blot analysis was performed using [KD Validated] YTHDC2 Rabbit polyclonal antibody (STJ11105298) at 1:1000 dilution.



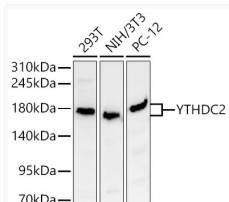
Immunofluorescence analysis of paraffin-embedded Rat testis using [KD Validated] YTHDC2 Rabbit polyclonal antibody (STJ11105298) at a dilution of 1:150 (40x lens). Secondary antibody: Cy3 Goat Anti-Rabbit IgG (H+L) at 1:500 dilution. Blue: DAPI for nuclear staining.



Immunofluorescence analysis of paraffin-embedded Mouse testis using [KD Validated] YTHDC2 Rabbit polyclonal antibody (STJ11105298) at a dilution of 1:150 (40x lens). Secondary antibody: Cy3 Goat Anti-Rabbit IgG (H+L) at 1:500 dilution. Blue: DAPI for nuclear staining.



Western blot analysis of lysates from wild type (WT) and YTHDC2 knockdown (KD) HeLa cells using [KD Validated] YTHDC2 Rabbit polyclonal antibody (STJ11105298) at 1:1000 dilution. Secondary antibody: HRP Goat Anti-Rabbit IgG (H+L) (STJS000856) at 1:10000 dilution. Lysates/proteins: 25 µg per lane. Blocking buffer: 3% nonfat dry milk in TBST. Detection: ECL Basic Kit. Exposure time: 30s.



Western blot analysis of various lysates using [KD Validated] YTHDC2 Rabbit polyclonal antibody (STJ11105298) at 1:1000 dilution. Secondary antibody: HRP Goat Anti-Rabbit IgG (H+L) (STJS000856) at 1:10000 dilution. Lysates/proteins: 25 µg per lane. Blocking buffer: 3% nonfat dry milk in TBST. Detection: ECL Basic Kit. Exposure time: 30s.