

Anti-GATA2 antibody (240-340) (STJ11105296)

GENERAL INFORMATION

Product Type	Primary antibodies
Applications	IHC-P/ELISA
Host / Source	Rabbit
Reactivity	Human

PRODUCT PROPERTIES

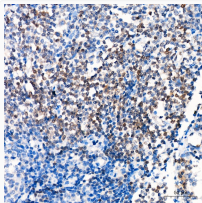
Clonality	Polyclonal
Concentration	Lot specific
Conjugation	Unconjugated
Purification	Affinity purification
Dilution Range	IHC-P:1:50-1:200 ELISA:Recommended starting concentration is 1 µg/mL. Please optimize the concentration based on your specific assay requirements.
Formulation	PBS with 0.05% Proclin300, 50% Glycerol, pH 7.3.
Isotype	IgG
Molecular Weight	Protein Mw: 51kDa Observed Mw: Refer to figures
Storage Instruction	Store at -20°C for up to 1 year from the date of receipt, and avoid repeat freeze-thaw cycles.

TARGET INFORMATION

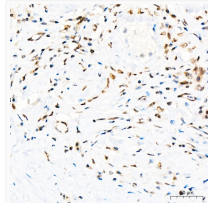
Gene ID	2624
Gene Symbol	GATA2
UniProt ID	GATA2_HUMAN
Immunogen Region	240-340
Immunogen Sequence	PATHHHPIPTYPSYVPAAAHYD YSSGLFHPGGFLGGPASSFT PKQRSKARSCSEGRECVNCG ATATPLWRRDGTGHYLCNAC GLYHKMNGQNRPLIKPKRRL S
Specificity	A synthetic peptide corresponding to a sequence within amino acids 240-340 of human GATA2 (NP_116027.2).

ADDITIONAL INFORMATION

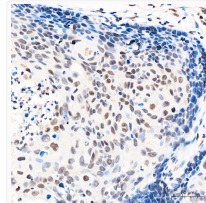
Note STRICTLY FOR FURTHER SCIENTIFIC RESEARCH USE ONLY (RUO). MUST NOT TO BE USED IN DIAGNOSTIC OR THERAPEUTIC APPLICATIONS.



Immunohistochemistry analysis of GATA2 in paraffin-embedded human tonsil tissue using GATA2 Rabbit polyclonal antibody (STJ11105296) at a dilution of 1:100 (40x lens). High pressure antigen retrieval was performed with 0.01 M citrate buffer (pH 6.0) prior to immunohistochemistry staining.



Immunohistochemistry analysis of GATA2 in paraffin-embedded human testis tissue using GATA2 Rabbit polyclonal antibody (STJ11105296) at a dilution of 1:100 (40x lens). High pressure antigen retrieval was performed with 0.01 M citrate buffer (pH 6.0) prior to immunohistochemistry staining.



Immunohistochemistry analysis of GATA2 in paraffin-embedded Human cervical squamous cell carcinoma tissue using GATA2 Rabbit polyclonal antibody (STJ11105296) at a dilution of 1:100 (40x lens). High pressure antigen retrieval was performed with 0.01 M citrate buffer (pH 6.0) prior to immunohistochemistry staining.