

## Anti-Cleaved-IL18-Tyr37 antibody [S5289RM] (STJ11105289)

### GENERAL INFORMATION

Product Type	Primary antibodies
Applications	WB
Host / Source	Rabbit
Reactivity	Human

### PRODUCT PROPERTIES

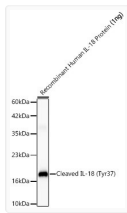
Clonality	Monoclonal
Concentration	Lot specific
Conjugation	Unconjugated
Purification	Affinity purification
Dilution Range	WB:1:1000-1:2000
Formulation	PBS with 0.09% Sodium Azide, 0.05% BSA, 50% Glycerol, pH7.3.
Isotype	IgG
Molecular Weight	Protein Mw: 22KDa Observed Mw: 18KDa
Storage Instruction	Store at -20°C for up to 1 year from the date of receipt, and avoid repeat freeze-thaw cycles.

### TARGET INFORMATION

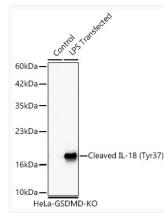
Gene ID	<a href="#">3606</a>
Gene Symbol	<a href="#">IL18</a>
UniProt ID	<a href="#">IL18_HUMAN</a>
Specificity	A synthetic peptide corresponding to residues surrounding Tyr37 of human IL18 (NP_001553.1).

### ADDITIONAL INFORMATION

Note **STRICTLY FOR FURTHER SCIENTIFIC RESEARCH USE ONLY (RUO). MUST NOT TO BE USED IN DIAGNOSTIC OR THERAPEUTIC APPLICATIONS.**



Western blot analysis of recombinant Human IL-18 Protein using Cleaved IL-18 (Tyr37) Rabbit monoclonal antibody (STJ11105289) at 1:1000 dilution. Secondary antibody: HRP Goat Anti-Rabbit IgG (H+L) (STJS000856) at 1:10000 dilution. Lysates/proteins: 1 ng per lane. Blocking buffer: 3% nonfat dry milk in TBST. Detection: ECL Basic Kit. Exposure time: 60s.



Western blot analysis of lysates from GSDMD knockout (KO) HeLa cells and GSDMD knockout (KO) HeLa cells transfected with LPS using Cleaved IL-18 (Tyr37) Rabbit monoclonal antibody (STJ11105289) at 1:1000 dilution. Secondary antibody: HRP Goat Anti-Rabbit IgG (H+L) (STJS000856) at 1:10000 dilution. Lysates/proteins: 25  $\mu$ g per lane. Blocking buffer: 3% nonfat dry milk in TBST. Detection: ECL Basic Kit. Exposure time: 60s. Western blot samples for antibody validation are kindly provided by Dr. Feng Shao, NIBS