

Anti-Collagen IV antibody (1573-1690) [S5279RM] (STJ11105279)

GENERAL INFORMATION

Product Type	Primary antibodies
Applications	WB/DB/ELISA
Host / Source	Rabbit
Reactivity	Human/Mouse/Rat

PRODUCT PROPERTIES

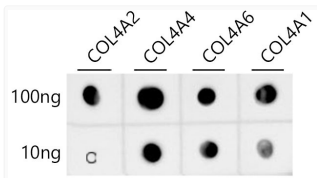
Clonality	Monoclonal
Concentration	Lot specific
Conjugation	Unconjugated
Purification	Affinity purification
Dilution Range	WB:1:1000-1:6000 DB:1:500-1:1000 ELISA:Recommended starting concentration is 1 Mu g/mL. Please optimize the concentration based on your specific assay requirements.
Formulation	PBS with 0.09% Sodium Azide, 0.05% BSA, 50% Glycerol, pH7.3.
Isotype	IgG
Molecular Weight	Protein Mw: 164kDa Observed Mw: 170-185kDa
Storage Instruction	Store at -20°C for up to 1 year from the date of receipt, and avoid repeat freeze-thaw cycles.

TARGET INFORMATION

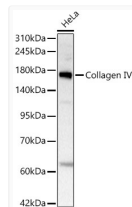
Gene ID	1282 1286 1284 COL4A1 COL4A4 CO4A1_HUMAN CO4A4_HUMAN CO4A2_HUMAN
Immunogen Region	1573-1690
Immunogen Sequence	AQAVAVHSQDQSIPPCPQTW RSLWIGYSFLMHTGAGDQGG GQALMSPGSCLEDFRAAPFL ECQGRQGTCHFFANKYSFWL TTVKADLQFSSAPAPDTLKE SQAQRQKISRQCVCVKYS
Specificity	Recombinant fusion protein containing a sequence corresponding to amino acids 1573-1690 of human COL4A4 (NP_000083.3).

ADDITIONAL INFORMATION

Note STRICTLY FOR FURTHER SCIENTIFIC RESEARCH USE ONLY (RUO). MUST NOT TO BE USED IN DIAGNOSTIC OR THERAPEUTIC APPLICATIONS.



Dot-blot analysis of all sorts of peptides using Collagen IV Rabbit monoclonal antibody (STJ11105279) at 1:1000 dilution.



Western blot analysis of HeLa, using Collagen IV Rabbit monoclonal antibody (STJ11105279) at 1:1000 dilution. Secondary antibody: HRP Goat Anti-Rabbit IgG (H+L) (STJS000856) at 1:10000 dilution. Lysates/proteins: 25ug per lane. Blocking buffer: 3% nonfat dry milk in TBST. Detection: ECL Basic Kit. Exposure time: 5s.