

Anti-PKC alpha + beta + gamma antibody (300-500) [S5277RM] (STJ11105277)

GENERAL INFORMATION

Product Type	Primary antibodies
Applications	WB/ELISA
Host / Source	Rabbit
Reactivity	Human/Mouse/Rat

PRODUCT PROPERTIES

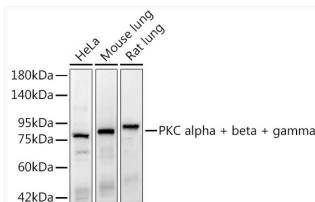
Clonality	Monoclonal
Concentration	Lot specific
Conjugation	Unconjugated
Purification	Affinity purification
Dilution Range	WB:1:2000-1:8000 ELISA:Recommended starting concentration is 1 µg/mL. Please optimize the concentration based on your specific assay requirements.
Formulation	PBS with 0.02% Sodium Azide, 0.05% BSA, 50% Glycerol, pH 7.3.
Isotype	IgG
Molecular Weight	Protein Mw: 78kDa Observed Mw: 78kDa
Storage Instruction	Store at -20°C for up to 1 year from the date of receipt, and avoid repeat freeze-thaw cycles.

TARGET INFORMATION

Gene ID	5579 5581 5582 PRKCB PRKCE KPCB_HUMAN KPCE_HUMAN KPCG_HUMAN
Immunogen Region	300-500
Immunogen Sequence	ELRQKFERAKISQGTKVPTEE KTTNTVSKFDNNGNRDRMKL TDFNFLMVLGKGSFGKVMLS ERKGTDELYAVKILKKDVVI QDDVVECTMVEKRVLALPGK PPFLTQLHSCFQTMDRLYFV MEYVNGGDLMYHIQQVGRFK EPHAVFYAAEIAIGLFFLQS KGIIYRDLKLDNVMLDSEGH IKIADFGMCKENIWDGVTTK T
Specificity	A synthetic peptide corresponding to a sequence within amino acids 300-500 of human PKC alpha + beta + gamma (NP_002728.2/NP_002729.2/NP_002730.1).

ADDITIONAL INFORMATION

Note **STRICTLY FOR FURTHER SCIENTIFIC RESEARCH USE ONLY (RUO). MUST NOT TO BE USED IN DIAGNOSTIC OR THERAPEUTIC APPLICATIONS.**



Western blot analysis of various lysates, using PKC alpha + beta + gamma Rabbit monoclonal antibody (STJ11105277) at 1:2000 dilution. Secondary antibody: HRP Goat Anti-Rabbit IgG (H+L) (STJS000856) at 1:10000 dilution. Lysates/proteins: 25 µg per lane. Blocking buffer: 3% nonfat dry milk in TBST. Detection: ECL Basic Kit. Exposure time: 20s.