

Anti-PHF11 antibody (40-321) [S5273RM] (STJ11105273)

GENERAL INFORMATION

Product Type	Primary antibodies
Applications	WB/ELISA
Host / Source	Rabbit
Reactivity	Human/Mouse/Rat

PRODUCT PROPERTIES

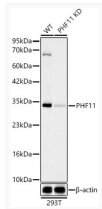
Clonality	Monoclonal
Concentration	Lot specific
Conjugation	Unconjugated
Purification	Affinity purification
Dilution Range	WB:1:2000-1:8000 ELISA:Recommended starting concentration is 1 Mu g/mL. Please optimize the concentration based on your specific assay requirements.
Formulation	PBS with 0.05% Proclin300, 0.05% BSA, 50% Glycerol, pH 7.3.
Isotype	IgG
Molecular Weight	Protein Mw: 38kDa Observed Mw: 34kDa
Storage Instruction	Store at-20°C for up to 1 year from the date of receipt, and avoid repeat freeze-thaw cycles.

TARGET INFORMATION

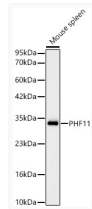
Gene ID	51131
Gene Symbol	PHF11
UniProt ID	PHF11_HUMAN
Immunogen Region	40-321
Immunogen Sequence	MEKRTCALCPKDVEYNVLYF AQSENIAAHENCLLYSSGLV ECEDQDPLNPDRSFDVESVK KEIQRGRKCLKCKFCHKRGAT VGCDLKNCNKNYHFFCAKDD DAVPQSDGVRGIYKLLCQQH AQFPPIAQSAKFSGVKRRKRG RKKPLSGNHVQPPETMKCNT FIRQVKEEHGRHTDATVKVP FLKKCKEAGLLNLYLEEILD KVHSIPEKLMDETTSESDDYE EIGSALFDCRLFEDTFVNF
Specificity	Recombinant fusion protein containing a sequence corresponding to amino acids 40-321 of human PHF11 (NP_001035533.1).

ADDITIONAL INFORMATION

Note **STRICTLY FOR FURTHER SCIENTIFIC RESEARCH USE ONLY (RUO). MUST NOT TO BE USED IN DIAGNOSTIC OR THERAPEUTIC APPLICATIONS.**



Western blot analysis of extracts from wild type (WT) and PHF11 knockdown (KD) 293T cells, using PHF11 Rabbit monoclonal antibody (STJ11105273) at 1:2000 dilution. Secondary antibody: HRP Goat Anti-Rabbit IgG (H+L) (STJS000856) at 1:10000 dilution. Lysates/proteins: 25ug per lane. Blocking buffer: 3% nonfat dry milk in TBST. Detection: ECL Basic Kit. Exposure time: 30s.



Western blot analysis of Mouse spleen, using PHF11 Rabbit monoclonal antibody (STJ11105273) at 1:2000 dilution. Secondary antibody: HRP Goat Anti-Rabbit IgG (H+L) (STJS000856) at 1:10000 dilution. Lysates/proteins: 25ug per lane. Blocking buffer: 3% nonfat dry milk in TBST. Detection: ECL Basic Kit. Exposure time: 30s.