

## Anti-HOXD10 antibody (1-150) [S5272RM] (STJ11105272)

### GENERAL INFORMATION

Product Type	Primary antibodies
Applications	WB/ELISA
Host / Source	Rabbit
Reactivity	Mouse

### PRODUCT PROPERTIES

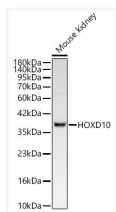
Clonality	Monoclonal
Concentration	Lot specific
Conjugation	Unconjugated
Purification	Affinity purification
Dilution Range	WB:1:1000-1:6000 ELISA:Recommended starting concentration is 1 µg/mL. Please optimize the concentration based on your specific assay requirements.
Formulation	PBS with 0.05% Proclin300, 0.05% BSA, 50% Glycerol, pH 7.3.
Isotype	IgG
Molecular Weight	Protein Mw: 38kDa Observed Mw: 38kDa
Storage Instruction	Store at -20°C for up to 1 year from the date of receipt, and avoid repeat freeze-thaw cycles.

### TARGET INFORMATION

Gene ID	<a href="#">3236</a>
Gene Symbol	<a href="#">HOXD10</a>
UniProt ID	<a href="#">HXD10_HUMAN</a>
Immunogen Region	1-150
Immunogen Sequence	MSFPNSSPAANTFLVDSLIS ACRSDSFYSSSASMYMPPPS ADMGTYGMQTCGLLP SLAKR EVNHQNMGMNVHPYIPQVDS WTDPNRSCRIEQPVTQQVPT CSFTTNIKEESNCCMYSDKR NKLISAEVPSYQRLVPESCP VENPEVPVPG
Specificity	Recombinant Protein corresponding to a sequence within amino acids 1-150 of human HOXD10 (NP_002139.2).

### ADDITIONAL INFORMATION

Note STRICTLY FOR FURTHER SCIENTIFIC RESEARCH USE ONLY (RUO). MUST NOT TO BE USED IN DIAGNOSTIC OR THERAPEUTIC APPLICATIONS.



Western blot analysis of Mouse kidney, using HOXD10 Rabbit monoclonal antibody (STJ11105272) at 1:1000 dilution. Secondary antibody: HRP Goat Anti-Rabbit IgG (H+L) (STJS000856) at 1:10000 dilution. Lysates/proteins: 25µg per lane. Blocking buffer: 3% nonfat dry milk in TBST. Detection: ECL Basic Kit. Exposure time: 10s.