

## Anti-PADI1 antibody (1-277) [S5264RM] (STJ11105264)

### GENERAL INFORMATION

Product Type	Primary antibodies
Applications	WB/ELISA
Host / Source	Rabbit
Reactivity	Human/Mouse

### PRODUCT PROPERTIES

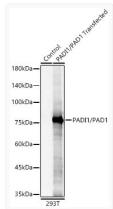
Clonality	Monoclonal
Concentration	Lot specific
Conjugation	Unconjugated
Purification	Affinity purification
Dilution Range	WB:1:1000-1:2000 ELISA:Recommended starting concentration is 1 Mu g/mL. Please optimize the concentration based on your specific assay requirements.
Formulation	PBS with 0.05% Proclin300, 0.05% BSA, 50% Glycerol, pH 7.3.
Isotype	IgG
Molecular Weight	Protein Mw: 74kDa Observed Mw: 75kDa
Storage Instruction	Store at-20°C for up to 1 year from the date of receipt, and avoid repeat freeze-thaw cycles.

### TARGET INFORMATION

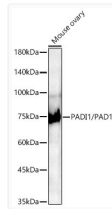
Gene ID	<a href="#">29943</a>
Gene Symbol	<a href="#">PADI1</a>
UniProt ID	<a href="#">PADI1_HUMAN</a>
Immunogen Region	1-277
Immunogen Sequence	MAPKRVVQLSLKMPHVAVCV VGVEAHVDIHSVDPKGANFS RVSGSSGVEFMVYNRTRVK EPIGKARWPLDADADMVVSV GTASKELKDFKVRVSYFGEQ EDQALGRSVLYLTGVDISLE VDTGRTGKVKRSQGDKKTWR WGPEGYGAILLVNCDRDNHR SAEPDLTHSWLMSLADLQDM SPMLLSCNGPKLFDShKLV LNVFSDSKRVRVFCARGGN SLSDYKQVLGPQCLSYEVE
Specificity	Recombinant fusion protein containing a sequence corresponding to amino acids 1-277 of human PADI1/PAD1 (NP_037490.2).

### ADDITIONAL INFORMATION

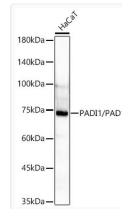
Note **STRICTLY FOR FURTHER SCIENTIFIC RESEARCH USE ONLY (RUO). MUST NOT TO BE USED IN DIAGNOSTIC OR THERAPEUTIC APPLICATIONS.**



Western blot analysis of lysates from wild type (WT) and 293T cells transfected with PADI1/PAD1 using PADI1/PAD1 Rabbit monoclonal antibody (STJ11105264) at 1:1000 dilution incubated overnight at 4 °C. Secondary antibody: HRP-conjugated Goat anti-Rabbit IgG (H+L) (STJS000856) at 1:10000 dilution. Lysates/proteins: 20 Mu g per lane. Blocking buffer: 3% nonfat dry milk in TBST. Detection: ECL Basic Kit Exposure time: 1 s.



Western blot analysis of lysates from Mouse ovary using PADI1/PAD1 Rabbit monoclonal antibody (STJ11105264) at 1:1400 dilution incubated overnight at 4 °C. Secondary antibody: HRP-conjugated Goat anti-Rabbit IgG (H+L) (STJS000856) at 1:10000 dilution. Lysates/proteins: 25 Mu g per lane. Blocking buffer: 3% nonfat dry milk in TBST. Detection: ECL Basic Kit Exposure time: 60 s.



Western blot analysis of lysates from HaCaT cells using PADI1/PAD1 Rabbit monoclonal antibody (STJ11105264) at 1:1000 dilution. Secondary antibody: HRP Goat Anti-Rabbit IgG (H+L) (STJS000856) at 1:10000 dilution. Lysates/proteins: 25ug per lane. Blocking buffer: 3% nonfat dry milk in TBST. Detection: ECL Basic Kit. Exposure time: 60s.