

## Anti-Pro-MMP9 antibody (20-107) [S5257RM] (STJ11105257)

### GENERAL INFORMATION

Product Type	Primary antibodies
Applications	WB/ELISA
Host / Source	Rabbit
Reactivity	Mouse

### PRODUCT PROPERTIES

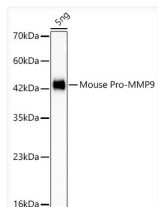
Clonality	Monoclonal
Concentration	Lot specific
Conjugation	Unconjugated
Purification	Affinity purification
Dilution Range	WB:1:1000-1:10000 ELISA:Recommended starting concentration is 1 $\mu$ g/mL. Please optimize the concentration based on your specific assay requirements.
Formulation	PBS with 0.05% Proclin300, 0.05% BSA, 50% Glycerol, pH 7.3.
Isotype	IgG
Molecular Weight	Protein Mw: 80KDa Observed Mw: 40kDa
Storage Instruction	Store at -20°C for up to 1 year from the date of receipt, and avoid repeat freeze-thaw cycles.

### TARGET INFORMATION

Gene ID	<a href="#">17395</a>
Gene Symbol	<a href="#">Mmp9</a>
UniProt ID	<a href="#">MMP9_MOUSE</a>
Immunogen Region	20-107
Immunogen Sequence	APYQRQPTFVVFVKDLKTSN LTDTQLAEAYLYRYGYTRAA QMMGKQSLRPALLMLQKQL SLPQTGELDSQTLKAIRTPR CGVPDVGR
Specificity	Recombinant fusion protein containing a sequence corresponding to amino acids 20-107 of mouse MMP9 (NP_038627.1).

### ADDITIONAL INFORMATION

Note STRICTLY FOR FURTHER SCIENTIFIC RESEARCH USE ONLY (RUO). MUST NOT TO BE USED IN DIAGNOSTIC OR THERAPEUTIC APPLICATIONS.



Western blot analysis of 5ng Mouse Pro-MMP9 protein, using Pro-MMP9 Rabbit monoclonal antibody (STJ11105257) at 1:1000 dilution. Secondary antibody: HRP Goat Anti-Rabbit IgG (H+L) (STJS000856) at 1:10000 dilution. Lysates/proteins: 25  $\mu$ g per lane. Blocking buffer: 3% nonfat dry milk in TBST. Detection: ECL Basic Kit. Exposure time: 0.3s.