

Anti-HSP90AA1 antibody (433-732 aa) (STJ11105239)

GENERAL INFORMATION

Product Type	Primary antibodies
Applications	WB/ELISA
Host / Source	Rabbit
Reactivity	Human/Mouse

PRODUCT PROPERTIES

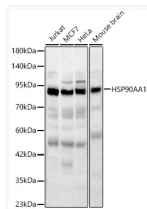
Clonality	Polyclonal
Concentration	Lot specific
Conjugation	Unconjugated
Purification	Affinity purification
Dilution Range	WB:1:100-1:500 ELISA:Recommended starting concentration is 1 Mu g/mL. Please optimize the concentration based on your specific assay requirements.
Formulation	PBS with 0.05% Proclin300, 50% Glycerol, pH 7.3.
Isotype	IgG
Molecular Weight	Protein Mw: 85kDa Observed Mw: 90kDa
Storage Instruction	Store at -20°C for up to 1 year from the date of receipt, and avoid repeat freeze-thaw cycles.

TARGET INFORMATION

Gene ID	3320
Gene Symbol	HSP90AA1
UniProt ID	HS90A_HUMAN
Immunogen Region	433-732 aa
Immunogen Sequence	NYKKFYEQFSKNIKLGIHED SQNRKLSSELLRYTSASGD EMVSLKDYCTRMKENQKHIY YITGETKDQVANSAFVERLR KHGLEVIYMIPEIDYCVQQ LKEFEGKTLVSVTKEGLELP EDEEEKKKQEEKTKFENLC KIMKDILEKKVEKVVVSNRL VTSPPCIVTSTYGTANMER IMKAQALRDNSTMGYMAAKK HLEINPDHSIIETLRQKAEA DKNDKSVKDLVILLYETAL
Specificity	Recombinant fusion protein containing a sequence corresponding to amino acids 433-732 of human HSP90AA1. (NP_005339.3).

ADDITIONAL INFORMATION

Note STRICTLY FOR FURTHER SCIENTIFIC RESEARCH USE ONLY (RUO). MUST NOT TO BE USED IN DIAGNOSTIC OR THERAPEUTIC APPLICATIONS.



Western blot analysis of various lysates, using HSP90AA1 Rabbit polyclonal antibody (STJ11105239) at 1:500 dilution. Secondary antibody: HRP Goat Anti-Rabbit IgG (H+L) (STJS000856) at 1:10000 dilution. Lysates/proteins: 25ug per lane. Blocking buffer: 3% nonfat dry milk in TBST. Detection: ECL Basic Kit. Exposure time: 90s.