

Anti-IMMP2L antibody (38-175) (STJ11105236)

GENERAL INFORMATION

Product Type	Primary antibodies
Applications	WB/IF/ICC/ELISA
Host / Source	Rabbit
Reactivity	Human/Mouse

PRODUCT PROPERTIES

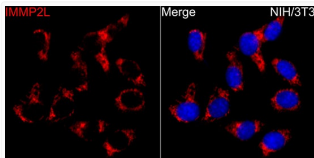
Clonality	Polyclonal
Concentration	Lot specific
Conjugation	Unconjugated
Purification	Affinity purification
Dilution Range	WB:1:500-1:1000 IF/CC:1:50-1:200 ELISA:Recommended starting concentration is 1 Mu g/mL. Please optimize the concentration based on your specific assay requirements.
Formulation	PBS with 0.05% Proclin300, 50% Glycerol, pH 7.3.
Isotype	IgG
Molecular Weight	Protein Mw: 12kDa/19kDa Observed Mw: 20kDa
Storage Instruction	Store at -20°C for up to 1 year from the date of receipt, and avoid repeat freeze-thaw cycles.

TARGET INFORMATION

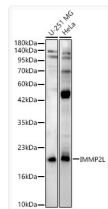
Gene ID	83943
Gene Symbol	IMMP2L
UniProt ID	IMP2L_HUMAN
Immunogen Region	38-175
Immunogen Sequence	TFLDRVACVARVEGASMQPS LNPGGSQSSDVLLNHWKVR NFEVHRGDIVSLVSPKNPEQ KIIKRVIALEGDIVRTIGHK NRYVKVPRGHIWVEGDHGHG SFDSNSFGPVSLLGHAHAT HILWPPERWQKLESVLPPER LPVQREEE
Specificity	Recombinant fusion protein containing a sequence corresponding to amino acids 38-175 of human IMMP2L (NP_001231535.1).

ADDITIONAL INFORMATION

Note **STRICTLY FOR FURTHER SCIENTIFIC RESEARCH USE ONLY (RUO). MUST NOT TO BE USED IN DIAGNOSTIC OR THERAPEUTIC APPLICATIONS.**



Immunofluorescence analysis of NIH/3T3 cells using IMMP2L Rabbit polyclonal antibody (STJ11105236) at dilution of 1:100 (40x lens). Secondary antibody: Cy3 Goat Anti-Rabbit IgG (H+L) at 1:500 dilution. Blue: DAPI for nuclear staining.



Western blot analysis of various lysates using IMMP2L Rabbit polyclonal antibody (STJ11105236) at 1:700 dilution. Secondary antibody: HRP Goat Anti-Rabbit IgG (H+L) (STJS000856) at 1:10000 dilution. Lysates/proteins: 25 Mu g per lane. Blocking buffer: 3 % nonfat dry milk in TBST. Detection: ECL Enhanced Kit. Exposure time: 60s.