

Anti-TIMM17B antibody (53-152) (STJ11105229)

GENERAL INFORMATION

Product Type	Primary antibodies
Applications	WB/ELISA
Host / Source	Rabbit
Reactivity	Human/Rat

PRODUCT PROPERTIES

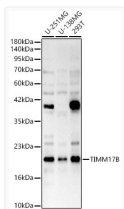
Clonality	Polyclonal
Concentration	Lot specific
Conjugation	Unconjugated
Purification	Affinity purification
Dilution Range	WB:1:500-1:1000 ELISA:Recommended starting concentration is 1 µg/mL. Please optimize the concentration based on your specific assay requirements.
Formulation	PBS with 0.05% Proclin300, 50% Glycerol, pH 7.3.
Isotype	IgG
Molecular Weight	Protein Mw: 18kDa Observed Mw: 20kDa
Storage Instruction	Store at -20°C for up to 1 year from the date of receipt, and avoid repeat freeze-thaw cycles.

TARGET INFORMATION

Gene ID	10245
Gene Symbol	TIMM17B
UniProt ID	T117B_HUMAN
Immunogen Region	53-152
Immunogen Sequence	NAVRIRAPQIGGSFAVWGGGL FSTIDCGLVRLRGKEDPWNS ITSGALTGAVLAARSGPLAM VGSAMMGILLALIEGVGIL LTRYTAQQFRNAPPFLEDPS
Specificity	A synthetic peptide corresponding to a sequence within amino acids 53-152 of human TIMM17B (NP_005825.1).

ADDITIONAL INFORMATION

Note STRICTLY FOR FURTHER SCIENTIFIC RESEARCH USE ONLY (RUO). MUST NOT TO BE USED IN DIAGNOSTIC OR THERAPEUTIC APPLICATIONS.



Western blot analysis of various lysates, using TIMM17B Rabbit polyclonal antibody (STJ11105229) at 1:700 dilution. Secondary antibody: HRP Goat Anti-Rabbit IgG (H+L) (STJS000856) at 1:10000 dilution. Lysates/proteins: 25µg per lane. Blocking buffer: 3% nonfat dry milk in TBST. Detection: ECL Enhanced Kit. Exposure time: 30s.