

## Anti-HYAL1 antibody (22-435) [S5225RM] (STJ11105225)

### GENERAL INFORMATION

Product Type	Primary antibodies
Applications	WB/ELISA
Host / Source	Rabbit
Reactivity	Human

### PRODUCT PROPERTIES

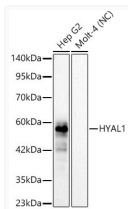
Clonality	Monoclonal
Concentration	Lot specific
Conjugation	Unconjugated
Purification	Affinity purification
Dilution Range	WB:1:1000-1:5000 ELISA:Recommended starting concentration is 1 µg/mL. Please optimize the concentration based on your specific assay requirements.
Formulation	PBS with 0.05% Proclin300, 0.05% BSA, 50% Glycerol, pH 7.3.
Isotype	IgG
Molecular Weight	Protein Mw: 10kDa/19kDa/23kDa/27kDa/37kDa/45kDa/48kDa Observed Mw: 60kDa
Storage Instruction	Store at-20°C for up to 1 year from the date of receipt, and avoid repeat freeze-thaw cycles.

### TARGET INFORMATION

Gene ID	<a href="#">3373</a>
Gene Symbol	<a href="#">HYAL1</a>
UniProt ID	<a href="#">HYAL1_HUMAN</a>
Immunogen Region	22-435
Immunogen Sequence	FRGPLLPNRPFTTVWNANTQ WCLERHGVDVDVSVFDVVAN PGQTFRGPDMTIFYSSQLGT YPPYTPTEGEPVFGGLPQNAS LIAHLARTFQDILAAIPAPD FSGLAVIDWEAWRPRWAFNW DTKDIYRQRSRALVQAQHPD WPAPQVEAVAQDQFQGAARA WMAGTLQLGRALRPRGLWGF YGFPCYNFYDFLSPNYTGQC PSGIRAQNDQLGWLWGQSRA LYPYIYMPAVLEGTKGSQM
Specificity	Recombinant fusion protein containing a sequence corresponding to amino acids 22-435 of human HYAL1 (NP_149349.2).

### ADDITIONAL INFORMATION

Note **STRICTLY FOR FURTHER SCIENTIFIC RESEARCH USE ONLY (RUO). MUST NOT TO BE USED IN DIAGNOSTIC OR THERAPEUTIC APPLICATIONS.**



Western blot analysis of various lysates, using HYAL1 Rabbit monoclonal antibody (STJ11105225) at 1:1500 dilution. Secondary antibody: HRP Goat Anti-Rabbit IgG (H+L) (STJS000856) at 1:10000 dilution. Lysates/proteins: 25 µg per lane. Blocking buffer: 3% nonfat dry milk in TBST. Detection: ECL Basic Kit. Negative control (NC) : MOLT-4. Exposure time: 60s.