

Anti-AP2B1 antibody (752-951 aa) [S5219RM] (STJ11105219)

GENERAL INFORMATION

Product Type	Primary antibodies
Applications	WB/ELISA
Host / Source	Rabbit
Reactivity	Human/Mouse/Rat

PRODUCT PROPERTIES

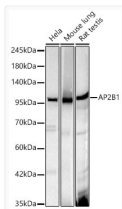
Clonality	Monoclonal
Concentration	Lot specific
Conjugation	Unconjugated
Purification	Affinity purification
Dilution Range	WB:1:500-1:1000 ELISA:Recommended starting concentration is 1 µg/mL. Please optimize the concentration based on your specific assay requirements.
Formulation	PBS with 0.05% Proclin300, 0.05% BSA, 50% Glycerol, pH 7.3.
Isotype	IgG
Molecular Weight	Protein Mw: 98kDa/104kDa/105kDa Observed Mw: 105kDa
Storage Instruction	Store at -20°C for up to 1 year from the date of receipt, and avoid repeat freeze-thaw cycles.

TARGET INFORMATION

Gene ID	163
Gene Symbol	AP2B1
UniProt ID	AP2B1_HUMAN
Immunogen Region	752-951 aa
Immunogen Sequence	MEMNFTNKALQHMTDFAIQF NKNSFGVIPSTPLAIHTPLM PNQSIDVSLPLNTLGPVMMK EPLNNLQVAVKNNIDVFYFS CLIPLNVLVFDGKMERQVF LATWKDIPNENELQFQKEC HLNADTVSSKLNQNNVYTIKRNVEGQDMLYQSLKLTNGI WILAEIRIQGNPNYTLSLK CRAPEVSQYIYQVYDSILKN
Specificity	Recombinant fusion protein containing a sequence corresponding to amino acids 752-951 of human AP2B1. (NP_001025177.1).

ADDITIONAL INFORMATION

Note **STRICTLY FOR FURTHER SCIENTIFIC RESEARCH USE ONLY (RUO). MUST NOT TO BE USED IN DIAGNOSTIC OR THERAPEUTIC APPLICATIONS.**



Western blot analysis of various lysates, using AP2B1 Rabbit monoclonal antibody (STJ11105219) at 1:1000 dilution. Secondary antibody: HRP Goat Anti-Rabbit IgG (H+L) (STJS000856) at 1:10000 dilution. Lysates/proteins: 25 µg per lane. Blocking buffer: 3% nonfat dry milk in TBST. Detection: ECL Basic Kit. Exposure time: 10s.