

Anti-TEAD4 antibody (140-240) [S5216RM] (STJ11105216)

GENERAL INFORMATION

Product Type	Primary antibodies
Applications	WB/ELISA
Host / Source	Rabbit
Reactivity	Human

PRODUCT PROPERTIES

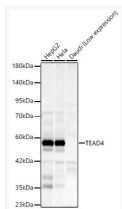
Clonality	Monoclonal
Concentration	Lot specific
Conjugation	Unconjugated
Purification	Affinity purification
Dilution Range	WB:1:500-1:1000 ELISA:Recommended starting concentration is 1 µg/mL. Please optimize the concentration based on your specific assay requirements.
Formulation	PBS with 0.05% Proclin300, 0.05% BSA, 50% Glycerol, pH 7.3.
Isotype	IgG
Molecular Weight	Protein Mw: 34kDa/44kDa/48kDa Observed Mw: 58kDa
Storage Instruction	Store at -20°C for up to 1 year from the date of receipt, and avoid repeat freeze-thaw cycles.

TARGET INFORMATION

Gene ID	7004
Gene Symbol	TEAD4
UniProt ID	TEAD4_HUMAN
Immunogen Region	140-240
Immunogen Sequence	SATAFHSSMALARGPGRPAV SGFWQGalPGQAGTSHDVKP FSQQTAYAVQPPLPLPGFESP AGPAPSPSAPPAPPWQGRSV ASSKLWMLEFSAFLEQQQDP D
Specificity	A synthetic peptide corresponding to a sequence within amino acids 140-240 of human TEAD4 (Q15561).

ADDITIONAL INFORMATION

Note STRICTLY FOR FURTHER SCIENTIFIC RESEARCH USE ONLY (RUO). MUST NOT TO BE USED IN DIAGNOSTIC OR THERAPEUTIC APPLICATIONS.



Western blot analysis of various lysates, using TEAD4 Rabbit monoclonal antibody (STJ11105216) at 1:1000 dilution. Secondary antibody: HRP Goat Anti-Rabbit IgG (H+L) (STJS000856) at 1:10000 dilution. Lysates/proteins: 25 µg per lane. Blocking buffer: 3% nonfat dry milk in TBST. Detection: ECL Basic Kit. Exposure time: 60s.